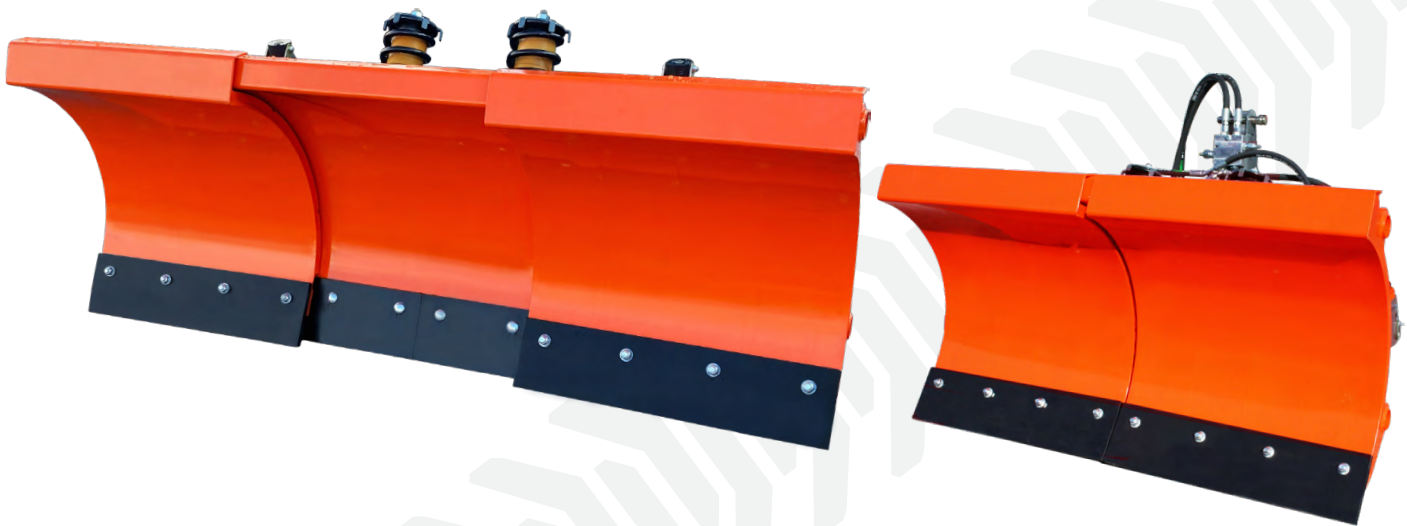


TELESCOPIC ANGLE PLOW

AP 50-12

New telescopic plow design. Plows from 50" to 72" when fully expanded. Independently control wings on nylon blocks featuring a full trip design to insure smooth operation. Custom sizes available. The cylinder bump stops prevent the cylinder from contracting and hitting the cylinder base. Made with a three-piece AR 400 cutting edge ensures unbeatable durability and strength. Offers up to a 30° angle that can be hydraulically or mechanically operated. One trip edge keeps the plow intact when hitting obstacles.



	AP50-12
Weight	900 lbs (408 kg)
Clearing Width	50-72" (127-183 cm)
Clearing Width at 28°	44-64" (112-162 cm)
Overall Width	50-72" (127-183 cm)
Mouldboard Height	29" (74 cm)
Swing Angle	28°
Cutting Edges	Mild steel standard, x4 edges 1/2" x 6"
Power Requirements	40 HP (30 kW)
Standard Features	Cylinder stop, Relief valve, Wings controlled independently, Full trip design, Nylon blocks to guide wings
Hitch Category	CAT 1, CAT 2, CAT 2 with lifting balls, Custom mounts available (2" Roundbar, Skid steer, A frame)
Options	Hardened Blade, Carbide Blade, Caster Wheels, Custom Colours & Sizes