



*for all seasons*

**ATTACHMENT MANUFACTURER**

Summer



Spring & Fall



Winter



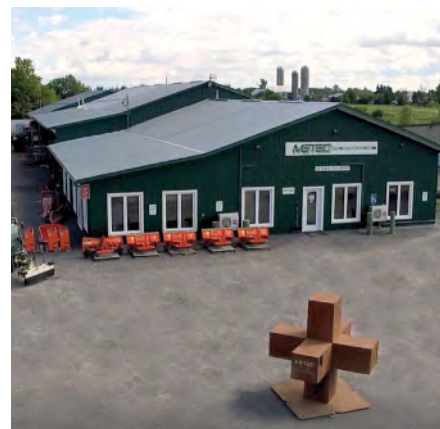
# METEC METAL TECHNOLOGY INC.

## WHY METEC ATTACHMENTS?

METEC Metal Technology Inc. is a precision machining and metal fabrication shop including CNC machining, welding, engineering and assembly of attachments or equipment and components. METEC Metal Technology Inc. prides itself in being an independent distributor and manufacturer of green care, snow removal and sweeping equipment from North American manufacturers.

Working together with most carrier vehicles and tractor manufacturers, we are able to support you in all your attachment needs.

Whether you are looking for a one off solution or attachments for your entire fleet, METEC can help. Please contact us at **613-678-3957** or **[sales@metec.ca](mailto:sales@metec.ca)** to find out more.



## DISCLAIMER

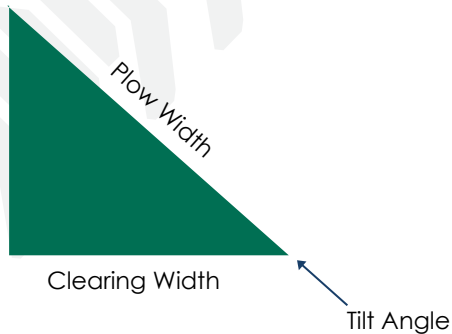
Different tractors may have different requirements. The fields that are blank vary depending on the equipment used and information available. Errors and omissions expected.



## CLEARING WIDTH CHART

Straight (Width of Plow)		Tilt angle 25°		Tilt angle 30°		Tilt angle 35°	
cm	Inch	cm	Inch	cm	Inch	cm	Inch
270	105	244	96.0	233	91.7	221	86.8
250	98	226	88.8	216	84.8	204	80.2
230	90	208	81.5	199	77.9	188	73.7
220	86	199	77.9	190	74.4	180	70.4
210	82.5	190	74.7	181	71.4	172	67.5
200	78.7	181	71.3	173	68.2	163	64.5
183	72	165	65.2	158	62.3	149	58.9
180	70.7	163	64.1	155	61.2	147	57.9
178	70	161	63.4	154	60.6	145	57.3
173	68	156	61.6	149	58.8	141	55.7
168	66	152	59.8	145	57.1	137	54.0
160	63	145	57.0	138	54.5	131	51.6
153	60.2	138	54.6	132	52.1	125	49.3
152	59.7	137	54.1	131	51.7	124	48.9
140	55	126	49.8	121	47.6	114	45.0
127	50	115	45.3	109	43.3	104	40.9
111	44	100	39.8	96	38.1	90	36.0

### FORMULA USED



$$\text{Clearing Width} = \cos(\text{Tilt Angle}) \times \text{Plow Width}$$

Example: 50" Plow Tilt angle 35°  
 Clearing Width =  $\cos(35) \times 50 = 40.9"$

## INDEX



### Miscellaneous

Counterweight WL32	TRA-WL32-011
Dump Body	DB 33, 48, 75, 100
Compact Dump Body	DB 42-10
Harness - Straight Frame Tractor	TRA-M5-091
Pressure Washer	HPWS
Reversible Flail Arm	UNA 100/200
Reversible Flail Arm	DBM 400
Attachments for Flail Arm	HS16/20, SWA900, LPW500, MKL10, PFP600-900, HS130 R

### Blowers

Compact Single Auger Snow Blower	SABBC 46
Single Auger Snow Blower	SABB 48, 51, 60, 72
Double Auger Snow Blower	SB 44, 50, 53, 60, 72
Heavy Duty Snow Blower	HDSB 60
Hydraulic/PTO Ribbon Blower	SB 1300, 1500
Hydraulic Ribbon Blower - BASIC	L 1200, 1300, 1400
PTO Ribbon Blower - MIDDLE	L 1200, 1300, 1400, 1500
Hydraulic Ribbon Blower - MIDDLE	L 1300, 1400, 1500, 1600
PTO Ribbon Blower - SUPER MIDDLE	L 1400, 1500, 1600
Hyd. Ribbon Blower - SUPER MIDDLE	L 1800, 2000
PTO Ribbon Blower - BIG	L 1600, 1800, 2000
Hydraulic Ribbon Blower - BIG	L 1600, 1800, 2000

### Plows

Folding V Plow	FVP 47, 55, 61, 66, 71
Fixed Angle Plow	FAP 50, 60
Compact Angle Plow	APC 48, 55, 60
3 Point Hitch Angle Plow	AP 50, 55, 60, 72
Oscillating Angle Plow	AP 60
Telescopic Angle Plow	AP 50-12
Heavy Duty Angle Plow	AP 60-14, 15, 16

### Spreaders

Compact Drop Spreader	DS 40-15
Drop Spreader	DS 40, 44, 60
Broadcast Spreader	BC 44, 60
Tow Behind Spreader	SKE 8, 15, 20
Three-point Spreader	D 301, D 601
Truck-mounted Spreader	A XX1



## Sweepers & Brushes

Large Sweeper	HS 84, 96, 108
Compact Sweeper	HSC 48, 60, 72
Sweeper	HS/MS 48, 60, 72
Brush Rings	Weed, Brush, Snow and Custom Brushes
Sanitizing Kit	SPT-032, SPT-033
Weed Control	UK 425, 475, 725 R/L
Weed Control	UK 625 MDS, UK 625 HDS

## Mowers

Light Rotary Mower	TM/TH 1500, 1800
Light FR Rotary Mower	FR 1500, 1800 LM/LH
Heavy Rotary Mower	FM/FH 1500, 1800, 2100, 2500 P
Side Discharge Rotary mower	HC/HCH 1500, 1800 A
Triplex Rotary Mower	TH/THM 2500, 3000
Triplex Rotary Mower	TH 2500, 3000 C
Easy Flail Mower	SK 1300, 1500, 1700 MM/MH
Heavy Flail Mower	SK 1500, 2000 PM/PH
Flail Mower Head	MKL 10

## Water Tanks

Water Tank	WT 100, 200
Water Tank	WT 80

## Cutting Edges

Steel Blade	MS
Combination Blade	MK
Rubber-Ceramic Blade	MGK
Rubber Blade	MG
Elastomer Blade	MEG 90
Rubber-Texture Blade	GG
Polyurethane Blade	PCS Greenline
How to Pick the Right Blade	
Types of Blades	
Blade Order Form	





# MISCELLANEOUS

## TRA-WL32-011



These counterweights are designed specifically for each tractor model and installed in as little as four hours. The loader arms are removed, allowing for a better view from the cab and an attachment that's much closer to the operator. Counterweights lower the centre of gravity and allow attachments like spreaders to be mounted at the rear. No modifications are required to the factory hydraulics. Three-point hitch attachments can be mounted without an adapter plate. The two independent lifting arms oscillate and are equipped with Oilite bronze bushings for corrosion resistance. They are also spaced for CAT 1 and CAT 2 hitches. Powder-coated for protection against corrosion. Model shown: Wacker Neuson WL32



TRA-WL32-011	
Weight	2,500 lbs (1,134 kg)
Width	39" (99 cm)
Length	46" (116.8 cm)
Height	34" (86.4 cm)
Standard Features	Low Profile, hydraulic Pickup, No modifications required for installation
Hitch Category	CAT I or CAT II
Options	Custom Colours, 2" Round bar mount

# DUMP BODY



**DB 33, 48, 75, 99, 100**



This dump body is specifically engineered and customized for your tractor and needs. Designed to work with a rear-mounted drop or broadcast spreader. With a capacity that is up to three times higher than a rear spreader, this dump box allows you to go longer distances between refills. The joints are fully welded to prevent rust. Powder-coated for protection against any type of corrosion. A water tank can easily be mounted and secured with a strap. The perfect way to safely carry salt, sand, tools, and machinery.



	DB33	DB48	DB75	DB99	DB100
<b>Capacity</b>	~1/2 cu yd (382 ℓ)	~1/4 cu yd (573 ℓ)	~1/2 cu yd (382 ℓ)	~1/4 cu yd (573 ℓ)	~7/8 cu yd (670 ℓ)
<b>Weight</b>	230 lbs (104 kg)	340 lbs (154 kg)	250 lbs (113 kg)	295 lbs (134 kg)	315 lbs (143 kg)
<b>Overall Width</b>	38.5" (90 cm)	43" (109 cm)	43" (109 cm)	42" (107 cm)	50" (127 cm)
<b>Overall Height</b>	22.5" (57 cm)	21" (53 cm)	16" (40.6 cm)	20" (51 cm)	22" (56 cm)
<b>Overall Length</b>	50" (127 cm)	62" (157.5 cm)	67" (170 cm)	66" (168 cm)	68" (173 cm)
<b>Steel Gauge</b>	11 Gauge				
<b>Standard Features</b>	Powder coated, Mild Steel				
<b>Options</b>	Custom designed to fit your tractor and application, Stainless Steel				

\*Above dimensions and weights are dependent on the model of tractor being used with. For other models please contact METEC for more details.

# COMPACT DUMP BODY



## DB42-10



This dump box is specifically engineered and developed with weight reduction in mind. Designed to work with a rear-mounted drop or broadcast spreader. This dump box allows you to go longer distances between refills. The joints are fully welded to prevent rust. Powder-coated for protection against any type of corrosion. The perfect way to safely carry salt, sand, tools, and machinery.



	DB42-10
Capacity	8 cubic feet (226.5 l)
Weight	120 lbs (54.4 kg)
Overall Width	43" (109 cm)
Overall Height	16" (40.6 cm)
Overall Length	46.5" (118 cm)
Steel Gauge	14 Gauge
Standard Features	Powder coated, Mild Steel
Options	Custom designed to fit your tractor and application, Stainless Steel

\*Above dimensions and weights are dependent on the model of tractor being used with. For other models please contact METEC for more details.



# STRAIGHT FRAME TRACTOR HARNESS

TRA-M5-091



Designed and built by METEC, these harnesses can mount snowblowers, snowplows, sweepers, ice breakers, and many more attachments to the front of your tractor. Even though the harness is mounted from the front of the tractor, it reaches all the way to the rear axle to provide the most strength and rigidity, so attachments can be mounted without loader arms. Little to no modifications are required to your tractor. It provides a separate PTO drive at the front of the tractor.



## STRAIGHT FRAME TRACTOR HARNESS

### Standard Features

High Strength Steel, Powder Coated

### Hitch Category

2" Round bar Mount, 3 Point Hitch CAT I/ CAT II Universal

### Options

PTO Gearbox 540 RPM 6 Spline

**Note:** 3 Point Hitch and PTO Gearbox require modifications to the tractor frame and drive train. Please inquire.



BUILT TO LAST

METAL TECHNOLOGY INC.

METEC

# TELESCOPIC PRESSURE WASHER

## HPWS



Use this high-pressure washer to get sidewalks, pathways, and roadways clean. When paired with METEC's water tank, it offers a cost-effective solution that is sure to please. Not only can it be used for sidewalks, parking garages, and public areas, but it can also be expanded to clear a one-lane road. The spray nozzles are designed to provide the best coverage with the least amount of liquid. It can be angled up to 30°, so you can reach even the tightest of spaces.



HPWS	
Weight	350 lbs (158 kg)
Clearing Width	53" - 96" (135 - 244 cm)
Closed Width	56" (142 cm)
Overall Height	42" (107 cm)
Overall Depth	50" (127 cm)
Swing Angle	30° left & right
Power Requirements	25 HP (19 kW)
Max Volume	31.7 GPM (120 l/min)
Max Discharge Pressure	870 PSI (60 Bar)
Standard Features	PTO Driven / 540 RPM
Hitch Category	CAT I or CAT II
Options	LED lights, Swivel casters / 1000 RPM

BUILT TO LAST

METEC  
METAL TECHNOLOGY INC.



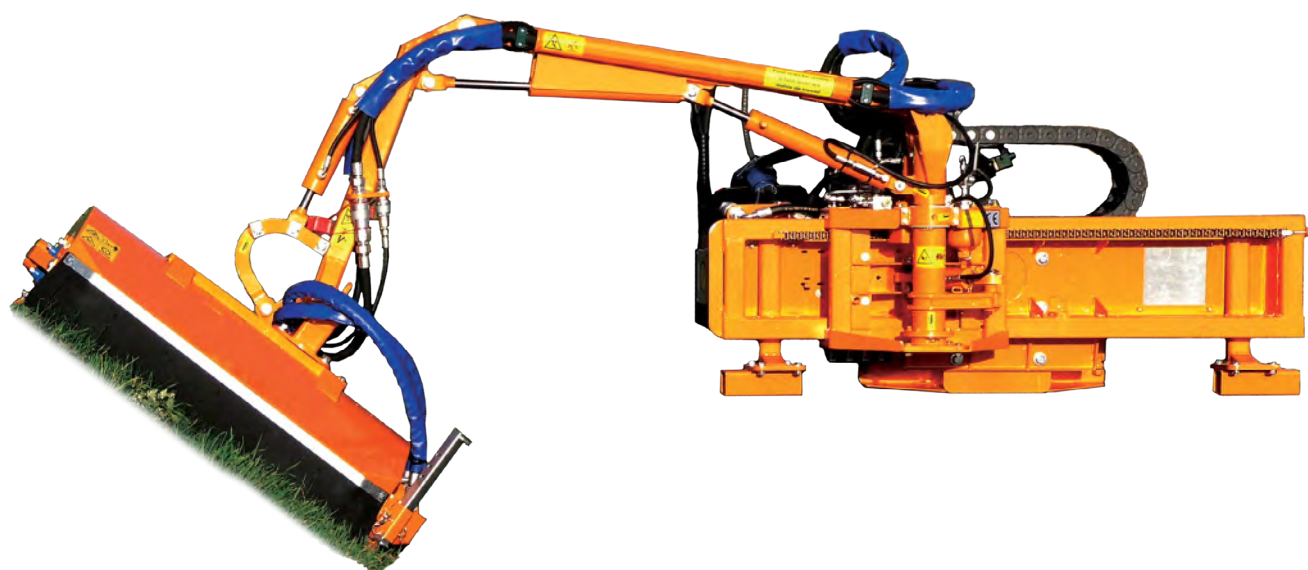
# REVERSIBLE FLAIL ARM



## UNA 100, 200



The UNA 100 and UNA 200 outriggers are specifically designed for attachment to multi-purpose municipal vehicles with a dedicated hydraulic system and hydraulically height-adjustable front attachment plate. Hydraulically powered or via the front PTO shaft. The basic units works with multiple attachments. The work equipment can be used to the left, right and in front of the vehicle.



Model	UNA 100	UNA 200
Weight	496 lbs (225 kg)	705 lbs (320 kg)
Max Reach from Centre	71" (1.8 m)	134" (3.4 m)
Transport Width	65" (1.65 m)	
Sliding Area	45" (1.15 m)	
Attachment Requirements	15.9 US GPM at 2900 psi (60 ℓ / min at 200 bar)	
Hydraulic Requirements	4 US GPM at 2610 psi (15 ℓ / min at 180 bar)	
Standard Features	Sliding front arm can switch from left to right side	
Hitch Category	3PH CAT I or II	
Options	Custom paint colours, CAN-BUS Controller, Power Unit for working equipment (pump, tank, relief valve and universal shaft), Hydraulic-aggregate for working equipment	

BUILT TO LAST

METEC  
METAL TECHNOLOGY INC.

# REVERSIBLE FLAIL ARM



## DBM 400



The DBM 400 outrigger was specifically designed for front attachment to municipal carrier vehicles or tractors and can be held by the three-point holder in sizes CAT I & II or via an attachment plate. Hydraulically powered or via the front PTO shaft. The basic unit works with multiple attachments.



Model	DBM 400
Weight	838 lbs (380 kg)
Max Reach from Centre	175" (4.45 m)
Transport Width	67" (1.7 m)
Sliding Area	45" (1.15 m)
Attachment Requirements	15.9 US GPM at 2900 psi (60 ℓ / min at 200 bar)
Hydraulic Requirements	5.3 US GPM at 2610 psi (20 ℓ / min at 180 bar)
Standard Features	Sliding front arm can switch from left to right side
Hitch Category	3PH CAT I or II
Options	Custom paint colours, CAN-BUS Controller, Power Unit for working equipment (pump, tank, relief valve and universal shaft), Hydraulic-aggregate for working equipment

BUILT TO LAST

METEC  
METAL TECHNOLOGY INC.

# REVERSIBLE FLAIL ARM - ATTACHMENTS

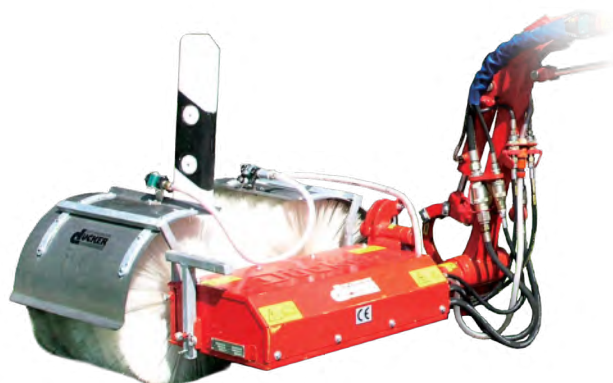
Attachments for UNA 100/200 and DBM 400



Hedge Cutter - HS16/20



Sign Washer - SWA 900



Reflector Post/Sign Cleaner - LPW 500



Flail Mower - MKL 10



Pavement Cleaner - PFP 600-900



Hedge Cutter - HS 130 R

BUILT TO LAST

METEC  
METAL TECHNOLOGY INC.



# BLOWERS HYDRAULIC & PTO



# COMPACT SINGLE AUGER BOX BLOWER



## SABBC 46 - Hydraulic

This compact box blower guarantees effective snow removal while being simple to use and safe to operate. More visibility is made possible by low-profile housing. The number of moving parts is decreased with direct-drive chutes. The impeller comes with 5 blades. Thanks to the superior finish, the blower will last longer while maintaining its new appearance. A covered auger chain prevents dirt and debris from entering. Hydraulic drive provides easy installation. AR 400 Cutting Edges and Skid shoes.



SABBC46	
Weight	475 lbs (215 kg)
Clearing Width	46" (117 cm)
Overall Width	46" (117 cm)
Overall Height	50" (127 cm)
Cutting Auger Diameter	16" (41 cm)
Chute	Hydraulic with 1 flap
Chute Rotation	230° – adjustable
Power Requirements	40 HP (30 kW)
Oil Requirements	14 GPM (50 l/min)
Impeller Diameter	5 blades 18 x 5.5" (46 x 14 cm)
Standard Features	Powder coated gray/black, 3/8" AR 400 Skid Shoes and Cutting Edge
Hitch Category	A-Frame, Custom
Options	Custom Colours, Sizes and Mounts Available

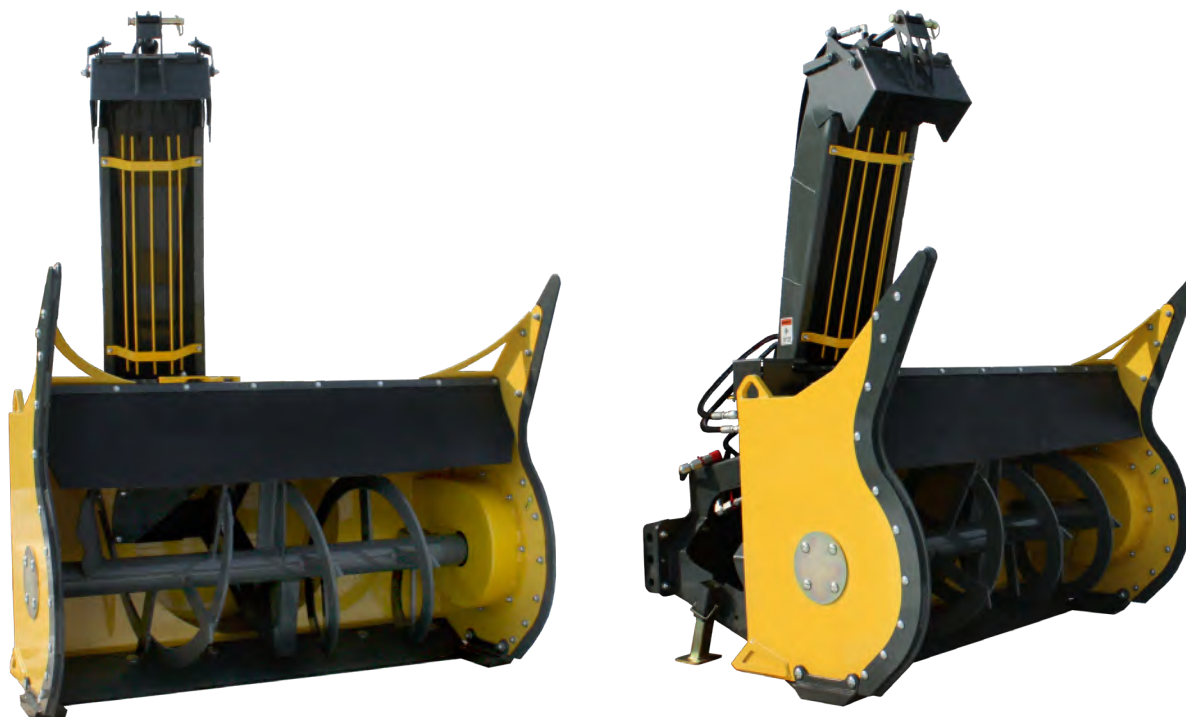
BUILT TO LAST  
METAL TECHNOLOGY INC.  
METEC

# SINGLE AUGER BOX BLOWER

## SABB 48, 50, 60, 72 - Mechanical/Hydraulic



This box blower ensures efficient snow removal combined with easy usability and safe operation. Low-profile housing and tall snow cutters allow for more visibility without sacrificing the cutting height. Direct-drive chute reduces the number of moving parts. The impeller comes in 3 or 5 curved blades depending on your tractor model. The superior finish helps keep the blower looking new and long-lasting. The enclosed auger chain keeps dirt and debris out. Hydraulic drive available.



	SABB50	SABB60
<b>Weight</b>	1,130 lbs (513 kg)	1,220 lbs (553 kg)
<b>Clearing Width</b>	50.25" (128 cm)	60" (152 cm)
<b>Overall Width</b>	52" (132 cm)	61" (155 cm)
<b>Overall Height</b>	77" (196 cm)	
<b>Cutting Auger Diameter</b>	19" (48 cm)	
<b>Power Requirements</b>	40 HP (30 kW)	
<b>Oil Requirements</b>	11/25 GPM (45/95 l/min) - for Hydraulic Version	
<b>Impeller Diameter</b>	5 blades 24"x9" (61x23 cm)	
<b>Standard Features</b>	Powder coated yellow/orange, 540/1000 rpm gearbox, Hardox Cutting Edge, Skid Shoes	
<b>Hitch Category</b>	CAT I or CAT II	
<b>Options</b>	Truck load chute, Custom colours, Quick Attach Plate, Telescopic Chute, Hardox Chute, Hardox Impeller, 4140 Hardened Adjustable Steel Skid Shoes, Carbide Cutting Edge, Adjustable Skid Shoes (Hardox), Hydraulic Option, Available, Custom Sizes Available	

**METEC**  
METAL TECHNOLOGY INC.

BUILT TO LAST

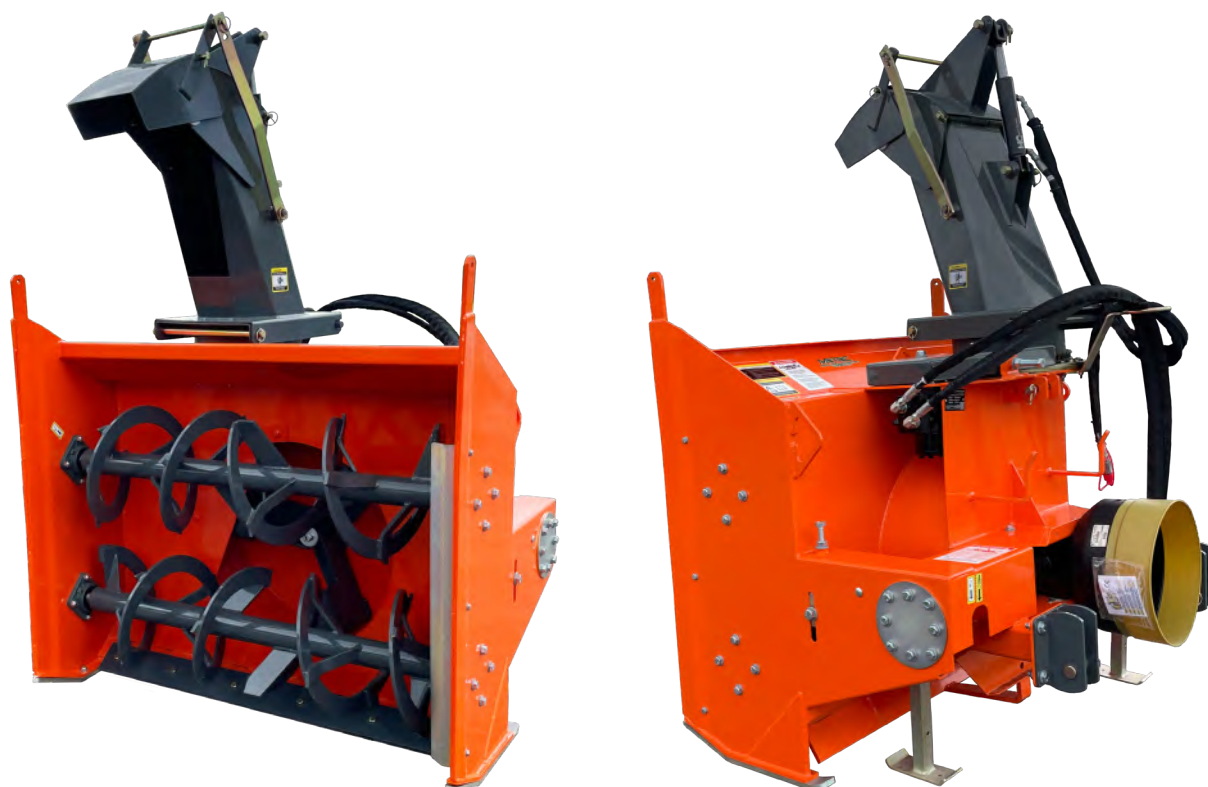


# DOUBLE AUGER BOX BLOWER

## SB 44, 50, 53, 60, 72 - Mechanical/Hydraulic



This classic double auger snowblower can fit most tractors over 40 HP. It's ideal for routine snow removal tasks, such as clearing sidewalks and parking lots, or loading trucks during snow clearing operations. With AR 400 skid shoes and cutting edges, the blower will get even the toughest jobs done. The double-auger design allows you to cut through big snowbanks with ease. The quick disconnect chute makes it simple to clean and maintain. Hydraulic drive available.



	SB44	SB50	SB53	SB60	SB72
<b>Weight</b>	760 lbs (344 kg)	1022 lbs (463 kg)	1062 lbs (482 kg)	1102 lbs (500 kg)	1187 lbs (538 kg)
<b>Clearing Width</b>	44" (112 cm)	50" (127 cm)	53" (135 cm)	60" (152 cm)	72" (183 cm)
<b>Overall Width</b>	44" (112 cm)	50" (127 cm)	53" (135 cm)	60" (152 cm)	72" (183 cm)
<b>Overall Height</b>	76" (193 cm)				
<b>Cutting Auger Diameter</b>	15" (38 cm)				
<b>Power Requirements</b>	40 HP (30 kW)				60 HP (45 kW)
<b>Oil Requirements</b>	11/25 GPM (45/95 l/min) - for Hydraulic Version				
<b>Impeller Diameter</b>	3 blades 24" x 8" (60 x 20 cm)				
<b>Standard Features</b>	Powder coated orange, 540 and 1000 rpm gearbox, Hardox skid shoes & cutting edge				
<b>Hitch Category</b>	CAT I or CAT II				
<b>Options</b>	LED working lights, Truck load chute 60" (150 cm), Custom colours, 5 Blade impeller				

BUILT TO LAST

METAL TECHNOLOGY INC.

METEC

# HEAVY DUTY SNOW BLOWER

## HDSB60



This heavy-duty double auger snowblower can fit any tractor over 60 HP. It's ideal for routine snow removal tasks, especially for loading trucks during snow clearing operations. It can withstand the toughest winters and large snowfalls. AR 400 skid shoes and cutting edges mean the blower will get even the toughest jobs done. Direct drive chute reduces the number of moving parts. The double-auger design, equipped with a four-blade impeller, allows you to cut through big snowbanks without any problems.



HDSB60	
Weight	1,187 lbs (538 kg)
Clearing Width	60" (152 cm)
Overall Width	60" (152 cm)
Overall Height	76" (193 cm)
Cutting Auger Diameter	15" (38 cm)
Power Requirements	60 HP (45 kW)
Impeller Diameter	5 blades 28" x 8" (71 x 20 cm)
Standard Features	Powder coated orange, 540 and 1000 rpm gearbox, Hardox skid shoes & cutting edge
Hitch Category	CAT I or CAT II
Options	LED working lights, Truck load chute 60" (150 cm), Custom colours

# HYDRAULIC/PTO RIBBON BLOWER

## SB 1300, 1500



A centre-driven design for increased efficiency! Standard AR 400 skid shoes and cutting edges ensure that even the toughest jobs are finished. The augers are made with a serrated edge to cut through hard-packed snow and easily break up the ice. The ejection chute was designed to have maximum rotation and throwing distance, so you can aim the snow exactly where you want it. You can rely on the screw-type chute rotation even during harsh conditions. The precision-balanced auger and five-blade impeller reduce vibration during operation.



	SB1300	SB1500
<b>Weight</b>	1,025 lbs (465 kg)	1,190 lbs (540 kg)
<b>Clearing Width</b>	51" (130 cm)	59" (150 cm)
<b>Overall Width</b>	51" (130 cm)	59" (150 cm)
<b>Overall Height</b>	83" (210 cm)	
<b>Cutting Auger Diameter</b>	21.5" (55 cm)	
<b>Power Requirements</b>	40 HP (30 kW) - 80 HP (60 kW)	
<b>Impeller Diameter</b>	24" (60 cm)	
<b>Standard Features</b>	Powder coated orange, PTO or Hydraulic, Hardox skid shoes & cutting edge	
<b>Hitch Category</b>	CAT II 3 Point Hitch	
<b>Options</b>	Working lights, Custom colours	

BUILT TO LAST

**METEC**  
METAL TECHNOLOGY INC.

# HYDRAULIC RIBBON BLOWER - BASIC

## L 1200, 1300, 1400



Ideal for lower horsepower tractors and skid steers. Thanks to its compact dimensions, it can be used in places where space is restricted and the clearing of snow would be impossible using standard equipment. The augers are made with a serrated edge to cut through hard-packed snow and ice. Adjustable skid shoes allow you to adjust the height of the cutting edge to save blowing gravel off of the pathway. Hydraulic chute rotation and deflector adjustment allow you to make adjustments without leaving the tractor cab.



	L 1200	L 1300	L 1400
<b>Weight</b>	485 lbs (220 kg)	529 lbs (240 kg)	562 lbs (255 kg)
<b>Clearing Width</b>	47" (120 cm)	51" (130 cm)	55" (140 cm)
<b>Overall Width</b>	48" (122 cm)	52" (132 cm)	65" (142 cm)
<b>Intake Height</b>	27.6" (70 cm)		
<b>Overall Height</b>	66" (168.5 cm)		
<b>Cutting Auger Diameter</b>	16" (40 cm) with ice-breaker		
<b>Oil Requirements</b>	10.5/16 GPM (40/60 l/min)	12/18.5 GPM (45/70 l/min)	13/18.5 GPM (50/70 l/min)
<b>Impeller Diameter</b>	16" (40 cm)		
<b>Standard Features</b>	Reinforced frame, cast iron gearbox, auger with ice breaker, hydraulic chute rotation, hydraulic chute deflector adjustment.		
<b>Hitch Category</b>	Mounting plate or similar connection		
<b>Options</b>	Fully-adjustable chute in galvanized iron, electric chute rotation, electric chute deflector, vertical floating suspension		

BUILT TO LAST

**METEC**  
METAL TECHNOLOGY INC.

# PTO RIBBON BLOWER - SUPER MIDDLE

## L 1400, 1500, 1600



Suitable for medium/large capacity tractors 80-120 HP. Lever-adjustable skid shoes, galvanized steel chute, hydraulic chute rotation, and deflector adjustment. Front or rear mount, and serrated heavy-duty augers. Self-supporting front auger with ice breakers. Galvanized steel tilt-up chute for easy cleaning. The augers are made with a serrated edge and reinforced to cut through hard-packed snow and ice. Adjustable skid shoes allow you to adjust the height of the cutting edge to save blowing gravel off of the pathway. Hydraulic chute rotation and deflector adjustment allow you to make adjustments without leaving the tractor cab.



	L 1400	L 1500	L 1600
<b>Weight</b>	838 lbs (380 kg)	904 lbs (410 kg)	970 lbs (440 kg)
<b>Clearing Width</b>	55" (140 cm)	59" (150 cm)	63" (160 cm)
<b>Overall Width</b>	57" (145 cm)	61" (155 cm)	65" (165 cm)
<b>Intake Height</b>	33.5" (85 cm)		
<b>Overall Height</b>	75" (190 cm)		
<b>Cutting Auger Diameter</b>	20" (50 cm)		
<b>Power Requirements</b>	50/100 HP (37/74.5 kW)	50/110 HP (37/82 kW)	65/110 HP (48.5/82 kW)
<b>Impeller Diameter</b>	20" (50 cm)		
<b>Standard Features</b>	Cast iron gearbox, auger with ice breaker, hydraulic chute rotation, hydraulic chute deflector adjustment, chute installed on thrust ball-bearings, hand-crank adjustable skid shoes		
<b>Hitch Category</b>	Category 2 3-point connector with swivel joints and slots for self-leveling.		
<b>Options</b>	Fully-adjustable chute in galvanized iron, electric chute rotation, electric chute deflector, automatic safety torque limiters on auger, chute extension.		

BUILT TO LAST

**METEC**  
METAL TECHNOLOGY INC.



# HYD. RIBBON BLOWER - SUPER MIDDLE

## L 1800, 2000



Suitable for large-sized skid-loaders, front-end loaders, and medium-sized wheel loaders. Adjustable skid shoes, galvanized steel chute, hydraulic chute rotation, and deflector adjustment. Heavy-duty serrated augers. Self-supporting front auger with ice breakers. Galvanized steel tilt-up chute for easy cleaning. The augers are made with a serrated edge and reinforced to cut through hard-packed snow and ice. Adjustable skid shoes allow you to adjust the height of the cutting edge to save blowing gravel off of the pathway. Hydraulic chute rotation and deflector adjustment allow you to make adjustments without leaving the tractor cab. Cast iron – self-bearing helices reducing friction for better performance.



	L 1800	L 2000
<b>Weight</b>	1,047 lbs (475 kg)	1,113 lbs (505 kg)
<b>Clearing Width</b>	71" (180 cm)	79" (200 cm)
<b>Overall Width</b>	73" (185 cm)	80.5" (205 cm)
<b>Intake Height</b>	33.5" (85 cm)	
<b>Overall Height</b>	72" (182 cm)	
<b>Cutting Auger Diameter</b>	20" (50 cm)	
<b>Oil Requirements</b>	26.5/37 GPM (100/140 l/min)	29/42 GPM (110/160 l/min)
<b>Impeller Diameter</b>	22" (55 cm)	
<b>Standard Features</b>	Reinforced frame, radial piston hydraulic motor, cast iron gearbox, auger with ice breaker, hydraulic chute rotation, hydraulic chute deflector adjustment.	
<b>Hitch Category</b>	Set-up for mounting plate or similar	
<b>Options</b>	Fully-adjustable chute in galvanized iron, electric chute rotation, electric chute deflector, vertical floating suspension, automatic safety torque limiters on auger.	

BUILT TO LAST

METEC METAL TECHNOLOGY INC.



# PTO RIBBON BLOWER - BIG



## L 1600, L 1800, L 2000



Professional two-phase snow turbine suitable for medium/large capacity tractors can be mounted to the front or rear, with a three-point hitch. Heavy-duty serrated augers, lever adjustable skid shoes, galvanized steel chute, hydraulic chute rotation, and deflector adjustment. Applicable to front and rear ends, with a three-point hitch. Heavy-duty serrated augers cut through the toughest hard-packed snow and ice. Adjustable skid shoes allow you to adjust the height of the cutting edge to save blowing gravel off of the pathway. Hydraulic chute rotation and deflector adjustment allow you to make adjustments without leaving the tractor cab. Galvanized steel chute to help prevent corrosion.



	L 1600	L 1800	L 2000
<b>Weight</b>	1,301 lbs (590 kg)	1,389 lbs (630 kg)	1,499 lbs (680 kg)
<b>Clearing Width</b>	63" (160 cm)	71" (180 cm)	79" (200 cm)
<b>Overall Width</b>	65" (165 cm)	73" (185 cm)	81" (205 cm)
<b>Intake Height</b>	37.5" (95 cm)		
<b>Overall Height</b>	87" (222 cm)		
<b>Cutting Auger Diameter</b>	24" (61 cm)		
<b>Power Requirements</b>	60/150 HP (45/112 kW)	70/150 HP (52/112 kW)	70/150 HP (52/112 kW)
<b>Impeller Diameter</b>	24.5" (62 cm)		
<b>Standard Features</b>	Reinforced frame, radial piston hydraulic motor, steel gearbox, auger with welded supports and ice breaker, hydraulic chute rotation, hydraulic chute deflector adjustment, tippable chute.		
<b>Hitch Category</b>	3 Point Hitch		
<b>Options</b>	Fully-adjustable chute in galvanized iron, automatic safety torque limiters on auger, swinging connection with hydraulic control, chute extension.		

BUILT TO LAST

METEC  
METAL TECHNOLOGY INC.

# HYDRAULIC RIBBON BLOWER - BIG

## L 1600, 1800, 2000



Professional two-phase snow turbine suitable for medium/large capacity tractors can be mounted to the front or rear, with a three-point hitch. Heavy-duty serrated augers, lever adjustable skid shoes, galvanized steel chute, hydraulic chute rotation, and deflector adjustment. Applicable to front and rear ends, with a three-point hitch. Heavy-duty serrated augers cut through the toughest hard-packed snow and ice. Adjustable skid shoes allow you to adjust the height of the cutting edge to save blowing gravel off of the pathway. Hydraulic chute rotation and deflector adjustment allow you to make adjustments without leaving the tractor cab.



	L 1600	L 1800	L 2000
<b>Weight</b>	1,345 lbs (610 kg)	1,477 lbs (670 kg)	1,609 lbs (730 kg)
<b>Clearing Width</b>	63" (160 cm)	71" (180 cm)	79" (200 cm)
<b>Overall Width</b>	65" (165 cm)	73" (185 cm)	80.5" (205 cm)
<b>Intake Height</b>	37.5" (95 cm)		
<b>Overall Height</b>	75" (190 cm)		
<b>Cutting Auger Diameter</b>	24" (61 cm)		
<b>Oil Requirements</b>	32/42 GPM (120/160 l/min)	34/42 GPM (130/160 l/min)	37/42 GPM (140/160 l/min)
<b>Impeller Diameter</b>	24.5" (62 cm)		
<b>Standard Features</b>	Reinforced frame, radial piston hydraulic motor, steel gearbox, auger with welded supports and ice breaker, hydraulic chute rotation, hydraulic chute deflector adjustment, tippable chute.		
<b>Hitch Category</b>	Set-up for mounting plate or similar		
<b>Options</b>	Fully-adjustable chute in galvanized iron, automatic safety torque limiters on auger, swinging connection with hydraulic control.		

BUILT TO LAST

METAL TECHNOLOGY INC.

**METEC**



# PLOWS

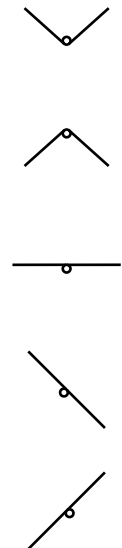
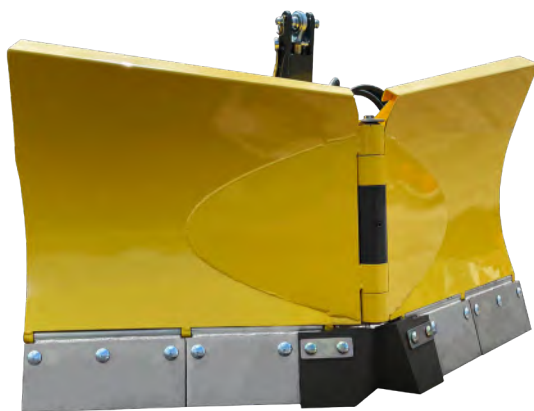
# FOLDING V PLOW





## FVP 47, 55, 61, 66, 71



This folding "V" plow lets you navigate with ease around park benches, light poles, fire hydrants, and other obstacles. The AR 400 cutting edges and adjustable skid shoes help extend the life of your cutting edges. Scoop, push, and pile snow thanks to the five possible blade positions that require only two hydraulic circuits and one case drain. The four independent trip edges and hydraulic shock absorption keep the plow steady and running smoothly, even when hitting obstacles. The nose piece is made of wear-resistant and durable polyurethane, and the compression springs are made of rubber, so they'll last a long time.



	FVP47	FVP55	FVP61	FVP66	FVP71
Weight	390 lbs (177 kg)	519 lbs (235 kg)	546 lbs (248 kg)	573 lbs (260 kg)	605 lbs (275 kg)
Clearing Width	47" (119 cm)	55" (140 cm)	60" (152 cm)	66" (168 cm)	70" (178 cm)
 Clearing Width	41" (104 cm)	48" (122 cm)	52" (132 cm)	58" (147 cm)	61" (155 cm)
 Clearing Width	41" (104 cm)	48" (122 cm)	52" (132 cm)	58" (147 cm)	61" (155 cm)
Overall Width	47" (119 cm)	55" (140 cm)	60" (152 cm)	66" (168 cm)	70" (178 cm)
Overall Height	33.5" (85 cm)				
Mouldboard	30" (76 cm) height / 11 gauge				
Swing Angle	30°				
Power Requirements	35 HP (26 kW)		40 HP (30 kW)		60 HP (45 kW)
Cutting Edges	x2 5.5" x 1/2"	x4 5.5" x 1/2" (14 x 1 cm)			
Standard Features	Rubber, UHMW, Mild steel, Stainless steel, Corundum, PU, Vulcalon, Carbide, Hardox				
	Hydraulic adjustment of plow blades, 5 positions, powder coat				
	A-Frame	CAT I or CAT II			
Options	LED working lights, Caster wheels, Oscillation, Curb wear block, Marker flags, Custom colours, liquid paint. Other sizes available please inquire.				

BUILT TO LAST

METAL TECHNOLOGY INC.





# FIXED ANGLE PLOW

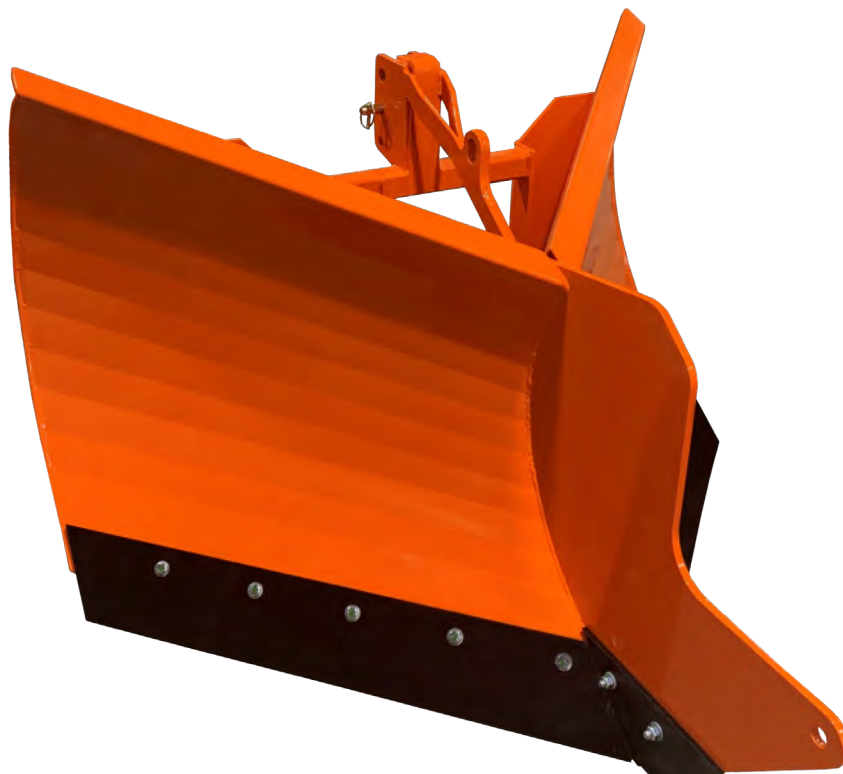
METEC

## FAP 50, 60



An economical plow design that's ideal for most tractors over 40 HP.

The AR 400 cutting edges, nose piece, and adjustable skid shoes help extend the life of your cutting edges. The heavy-duty fully welded steel frame assures a strong and solid construction, so you can plow through the thickest snow. There are no mechanical or moving parts, and this model is sure to fit your budget!



	FAP50	FAP60
Weight	300 lbs (136 kg)	342 lbs (155 kg)
Clearing Width	50" (127 cm)	60" (152 cm)
Overall Width	50" (127 cm)	60" (152 cm)
Overall Height	38" (97 cm)	
Mouldboard Height	30" (76 cm)	
Blade Angling (deg)	40°	
Power Requirements	40 HP (30 kW)	
Cutting Edges	Rubber, UHMW, Mild steel, Stainless steel, Corundum, PU, Vulcalon, Carbide, Hardox	
Standard Features	AR 400 cutting edge, skid shoes	
Hitch Category	CAT I or CAT II	
Options	Curb wear block, Marker flags, Custom colours. Other sizes available please inquire.	

BUILT TO LAST

METEC  
METAL TECHNOLOGY INC.

# COMPACT ANGLE PLOW

METEC

## APC 48, 55, 60



With weight reduction in mind this angle plow is simple and ideal for snow removal operations in urban areas, such as sidewalks and parking areas. The hydraulic relief valve prevents damage to the hydraulics when sudden impact or shock occurs. The cylinder bump stops prevent the cylinder from contracting and hitting the cylinder base. Made with a one-piece cutting edge designed with a full trip edge ensures unbeatable durability and strength. Offers up to a 30° angle that can be hydraulically or mechanically operated.



	APC48	APC55	APC60
<b>Weight</b>	315 lbs (143 kg)	358 lbs (162 kg)	368 lbs (167 kg)
<b>Clearing Width</b>	48" (122 cm)	55" (140 cm)	60" (152 cm)
<b>Clearing Width at 30°</b>	41.6" (106 cm)	47.6" (121 cm)	52" (132 cm)
<b>Overall Width</b>	49.5" (126 cm)	56.5" (144 cm)	61.5" (156 cm)
<b>Overall Height</b>	23" (58.5 cm)		
<b>Mouldboard Height</b>	21.5" (54.5 cm)		
<b>Swing Angle</b>	30°		
<b>Cutting Edges</b>	Rubber, UHMW, Mild steel, Stainless steel, Corundum, PU, Vulcalon, Carbide, AR 400		
<b>Power Requirements</b>	20 HP (15 kW)		
<b>Standard Features</b>	UHMW cutting edge, Hydraulic angling, Oscillation		
<b>Hitch Category</b>	A Frame, Custom available		
<b>Options</b>	Marker flags, Manual angling of blade, Custom colours, liquid paint. Other sizes available please inquire.		

BUILT TO LAST

METEC  
METAL TECHNOLOGY INC.



# 3 POINT HITCH ANGLE PLOW

AP 50, 55, 60, 72



Ideal for snow removal operations in urban areas, such as sidewalks and parking areas. The hydraulic relief valve prevents damage to the hydraulics when sudden impact or shock occurs. The cylinder bump stops prevent the cylinder from contracting and hitting the cylinder base. Made with a two-piece AR 400 cutting edge ensures unbeatable durability and strength. Offers up to a 30° angle that can be hydraulically or mechanically operated. Two trip edges keep the plow steady when hitting obstacles.



	AP50	AP55	AP60	AP72
<b>Weight</b>	525 lbs (240 kg)	550 lbs (250 kg)	575 lbs (261 kg)	720 lbs (328 kg)
<b>Clearing Width</b>	50" (127 cm)	55" (140 cm)	60" (152 cm)	72" (183 cm)
<b>Clearing Width at 30°</b>	43.3" (109 cm)	47.6" (121 cm)	52" (132 cm)	62.3" (158 cm)
<b>Overall Width</b>	50" (127 cm)	55" (140 cm)	60" (152 cm)	72" (183 cm)
<b>Overall Height</b>	36" (92 cm)			
<b>Mouldboard Height</b>	27" (68 cm)			
<b>Swing Angle</b>	30°			
<b>Cutting Edges</b>	Rubber, UHMW, Mild steel, Stainless steel, Corundum, PU, Vulcalon, Carbide, AR 400			
<b>Power Requirements</b>	40 HP (30 kW) - 93 HP (70 kW)			
<b>Standard Features</b>	AR 400 cutting edge, hydraulic angling, rubber deflector			
<b>Hitch Category</b>	CAT I or CAT II			
<b>Options</b>	Marker flags, Manual angling of blade, Oscillation, Custom colours, liquid paint. Other sizes available please inquire.			

BUILT TO LAST

METAL TECHNOLOGY INC.

METEC

# OSCILLATING ANGLE PLOW

METEC

## AP 60



This new and improved plow design is sure to impress! The 6° gravity oscillation requires no cylinders or springs. The cylinder bump stops prevent the cylinder from contracting and hitting the cylinder base. The hydraulic relief valve prevents damage to the hydraulics when sudden impact or shock occurs. With a one-piece cutting edge, the replacement process is a breeze. Thanks to the AR 400 curb guards and tapered mouldboard sides, your plow is protected and snowbanks are cut straight. The parking stands provided offer convenient parking and storage.



	AP60
Weight	635 lbs (288 kg)
Clearing Width	61" (155 cm)
Clearing Width at 28°	53.9" (137 cm)
Overall Width	61" (155 cm)
Mouldboard Height	28" (71 cm)
Swing Angle	28°
Cutting Edges	Mild steel standard
Power Requirements	40 HP (30 kW)
Standard Features	Oscillation 6°, Cylinder stops, one piece cutting edge, AR400 curb guards and sides, Collapsible spring guides, Adjustable parking legs, relief valve for cylinders
Hitch Category	CAT I, CAT II, 2" Ø Roundbar, Custom available
Options	Hardened blade, Carbide blade, Custom colours

BUILT TO LAST

METEC  
METAL TECHNOLOGY INC.

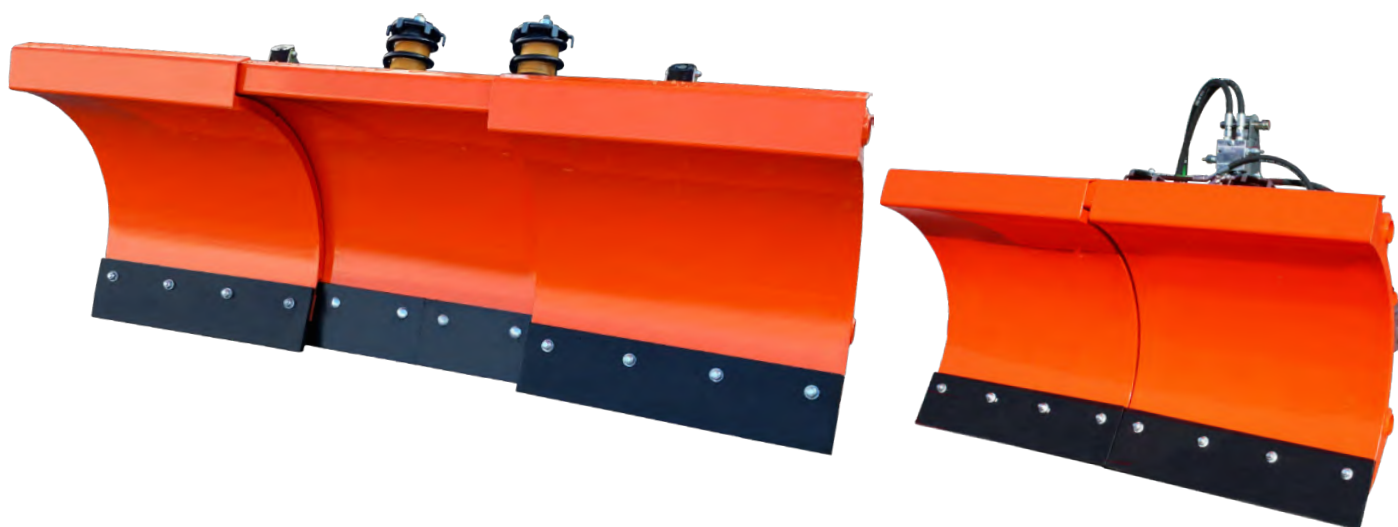
# TELESCOPIC ANGLE PLOW



## AP 50-12



New telescopic plow design. Plows from 50" to 72" when fully expanded. Independently control wings on nylon blocks featuring a full trip design to insure smooth operation. Custom sizes available. The cylinder bump stops prevent the cylinder from contracting and hitting the cylinder base. Made with a three-piece AR 400 cutting edge ensures unbeatable durability and strength. Offers up to a 30° angle that can be hydraulically or mechanically operated. One trip edge keeps the plow intact when hitting obstacles.



AP50-12	
Weight	900 lbs (408 kg)
Clearing Width	50-72" (127-183 cm)
Clearing Width at 28°	44-64" (112-162 cm)
Overall Width	50-72" (127-183 cm)
Mouldboard Height	29" (74 cm)
Swing Angle	28°
Cutting Edges	Mild steel standard, x4 edges 1/2" x 6"
Power Requirements	40 HP (30 kW)
Standard Features	Cylinder stop, Relief valve, Wings controlled independently, Full trip design, Nylon blocks to guide wings
Hitch Category	CAT 1, CAT 2, CAT 2 with lifting balls, Custom mounts available (2" Roundbar, Skid steer, A frame)
Options	Hardened Blade, Carbide Blade, Caster Wheels, Custom Colours & Sizes

BUILT TO LAST

METEC  
METAL TECHNOLOGY INC.

# HEAVY DUTY ANGLE PLOW



## AP 60-14, 15, 16



This Heavy-Duty Angle Plow is ideal for snow removal operations in urban areas. The hydraulic relief valve prevents damage to the hydraulics when sudden impact occurs. Designed with reinforced moldboard and angled edges for a straighter cut through snowbanks. A single carbide cutting edge ensuring unbeatable durability and strength.



	AP60-14, 15, 16
<b>Weight</b>	~750 lbs (340 kg)
<b>Clearing Width</b>	60" (152 cm)
<b>Clearing Width at 30°</b>	52" (132 cm)
<b>Overall Height</b>	36" (92 cm)
<b>Mouldboard Height</b>	27" (68 cm)
<b>Swing Angle</b>	30°
<b>Cutting Edges</b>	3/4" Carbide
<b>Power Requirements</b>	40 HP (30 kW) – 93 HP (70 kW)
<b>Standard Features</b>	Cylinder stops, one piece cutting edge, AR400 curb guards and sides, Adjustable parking legs, Relief valve for cylinders
<b>Hitch Category</b>	CAT I, CAT II, 2" Ø Roundbar, Custom available
<b>Options</b>	Custom colours

BUILT TO LAST







# SPREADERS



# COMPACT DROP SPREADER

## DS 40-15



This lightweight spreader is ideal for sanding or salting sidewalks and parking areas. Equipped with turn signals, brake, and backup lights for safety. Allows you to control the material flow rate effortlessly and manually. Hydraulically driven, the spreader is very easy to install and operate. The spreader is durable and has a low hydraulic requirement. The three-point hitch or skid steer mount ensures it'll fit on most tractors.



DS40-15	
Weight	320 lbs (145 kg)
Capacity	4 cu ft (113 ℓ)
Overall Width	40" (101.6 cm)
Overall Height	30" (76.2 cm)
Overall Depth	15.5" (39.4 cm)
Spreading Width	36" (91.4 cm)
Power Requirements	30 HP (22.4 kW)
Type	Hydraulic Driven
Standard Features	Mount for storage legs, Spill protector/enhancer
Hitch Category	Custom to MIC 42
Options	Rear LED working lights, Tarp/Cover, Storage legs

BUILT TO LAST

METAL TECHNOLOGY INC.

METEC

# DROP SPREADER

METEC

## DS 40, 44, 60



This spreader is ideal for sanding or salting sidewalks and parking areas. Equipped with turn signals and backup lights for safety. Allows you to effortlessly and manually control the material flow rate. Hydraulically driven, the sander is very easy to install and operate. The spreader is durable and has a low hydraulic requirement. The three-point hitch or skid steer mount ensures it'll fit on most tractors.



	DS40		DS44		DS60
Capacity	1/3 cu yd (255 ℓ)	1/2 cu yd (382 ℓ)	1/3 cu yd (255 ℓ)		3/4 cu yd (573 ℓ)
Weight	350 lbs (159 kg)	430 lbs (195 kg)	360 lbs (163 kg)		554 lbs (251 kg)
Overall Width	40" (102 cm)	44" (112 cm)			60" (152 cm)
Overall Height	30.5" (77 cm)	36" (92 cm)		37" (94 cm)	36" (92 cm)
Overall Depth	16" (41 cm)	22" (56 cm)		16" (41 cm)	22" (56 cm)
Spreading Width	36" (91 cm)	40" (102 cm)			56" (142 cm)
Power Requirements	40 HP (30 kW)				
Type	Hydraulic Driven				
Standard Features	Lights, Mount for storage legs				
Hitch Category	CAT I or CAT II				CAT II
Options	Rear LED working lights, Tarp/Cover, Storage legs, Spill protector/enhancer				

BUILT TO LAST

METAL TECHNOLOGY INC.

METEC

# BROADCAST SANDER



## BC 44, 60

Looking to cover sidewalks, pathways, roadways, and parking areas? This spreader is for you! Broadcast sand or salt from 3' to 25' (91-762 cm). The engineered stainless-steel spinner ensures the material is spread evenly across the whole surface. You can also adjust the spread based on your working area. Equipped with turn signals and backup lights for safety. Because it's hydraulically driven, the sander is very easy to install and operate. The three-point hitch or skid steer mount ensures it'll fit on most tractors.



	BC44	BC60
Capacity	1/2 cu yd (382 ℓ)	3/4 cu yd (573 ℓ)
Weight	460 lbs (209 kg)	554 lbs (251 kg)
Overall Width	44" (112 cm)	60" (152 cm)
Overall Height	36" (92 cm)	
Impeller Diameter	14" (36 cm)	
Spreading Distance	3-25' (91-762 cm)	
Power Requirements	40 HP (30 kW)	
Type	Hydraulic Driven	
Standard Features	Lights, Mount for storage legs	
Hitch Category	CAT I or CAT II	
Options	Rear LED working lights, Tarp/Cover, Storage legs, Spill protector/enhancer	

BUILT TO LAST

METAL TECHNOLOGY INC.



# TOW BEHIND SPREADER



## SKE 8, 15, 20



Meticulously designed to maintain a consistent delivery rate per square meter, regardless of changes in speed, ensuring a 100% road-speed correlation. The SKE spreader series boasts a robust construction across all models, each offering various hopper sizes to suit diverse needs. Specifically designed for towing behind tractors, these spreaders uphold Epoke's high standards with a comprehensive surface treatment process. This process includes sandblasting, zinc dust priming, a durable 2-component polyurethane base coat, and a finishing touch with a 2-component top coat.



	SKE 8	SKE 15	SKE 20
Capacity	1 cu yd (800 ℓ)	1 1/2 cu yd (1,250 ℓ)	2 cu yd (1,650 ℓ)
Weight	882 lbs (400 kg)	1,323 lbs (600 kg)	1,587 lbs (720 kg)
Spreading Width	39.7" (101 cm)	54.7" (139 cm)	75.5" (192 cm)
Overall Width	50.6" (129 cm)	65.6" (167 cm)	86.4" (220 cm)
Overall Height	42.5" (108 cm)	51.2" (130 cm)	
Standard Features	Agitator, spring base, spring base adjustment, transmission, coupling, driving shaft and support wheel.		
Hitch Category	Toe hook		
Options	Electrical remote control, extra agitator.		

BUILT TO LAST  
METAL TECHNOLOGY INC.  
METEC



# THREE-POINT SPREADER

METEC

## D 301, 601



Kugelmann's new generation of one-chamber three-point spreaders. The innovative material combination of stainless steel and high-quality plastic has unbeatable durability and reliability. The spreading width ranges from 39" to 276" (1 to 7 m) and can be adjusted electronically. Equipped with a three-point hitch, this spreader can be mounted on most tractors. The parking stand provided allows for easy parking and storage.



	D 301	D 601
<b>Weight</b>	392 lbs (178 kg)	492 lbs (223 kg)
<b>Capacity</b>	0,4 cu yd (300 ℓ)	0,78 cu yd (600 ℓ)
<b>Spreading Width</b>	39-276" (1-7 m)	
<b>Overall Height</b>	50" (127 cm)	54" (137 cm)
<b>Overall Width</b>	43" (108 cm)	53" (135 cm)
<b>Overall Length</b>	32" (82 cm)	
<b>Hitch Category</b>	3PH CAT I	
<b>Standard Features</b>	Parking Stand, Screw Conveyor for exact amounts, K-Tronic 1	
<b>Options</b>	Agitator shaft, K-Tronic 2 control system	

## K-TRONIC 2

K-TRONIC 2 offers a data recording feature for archiving of spreading data or GPS data. Choose your infinitely variable spread width or adjust the spread pattern in an asymmetric way, e.g. for spreading along the kerbside and mix your spreading material in any proportion.



BUILT TO LAST  
METAL TECHNOLOGY INC.  
METEC



# TRUCK-MOUNTED SPREADER

## A XX1



The one-chamber technology keeps things simple, which makes it ideal for many spreading applications. It's low-profile design ensures a lower centre of gravity to prevent tipping. Equipped with tarps that protect the material from rain and water. The auger includes three different axes for the perfect dosing and can be reversed if it gets blocked. The spreading width and direction can be adjusted by electronic control, even while in operation. The left and right sides also work independently! Completely made of stainless steel, the width, length, and height of this spreader can be adapted to fit almost any carrier vehicle. The hydraulic settings are tamper-proof for safety and security.



A XX1	
Weight	~551 lbs (~250 kg)
Capacity	~1/4 - 2 cu yd (200-1500 l)
Spreading Width	39-276" (1-7 m)
Chamber Height	24-37" (60-95 cm)
Overall Width	37-41" (93-105 cm)
Overall Length	31-91" (80-230 cm)
Standard Features	Easy Installation, Screw Conveyor, protective grid, manual setting of spreading functions, adjustable spread pattern, tarpaulin cover
Options	Control system with data recording, spreading process monitoring, splash guard, agitator shaft, reversal of screw movement, rotating beacon, camera set, flashing ring set, temperature sensor

BUILT TO LAST

METAL TECHNOLOGY INC.

METEC



# SWEEPERS PTO & HYDRAULIC

# SWEeper

METEC

## HS/MS 48, 60, 72



An all-season attachment that's ideal for sweeping snow, gravel, sand, and other debris. You can remove snow without worrying about damaging sidewalks and roads! The environmentally-friendly brushes are made of high-quality, wear-resistant polyurethane. The 32"-diameter brushes are quick and easy to change. The optional caster wheels make it easier to follow the edge of sidewalks and roads. Plastic cowling controls flying debris. The angle of the brush can be effortlessly hydraulically adjusted. Springs are also provided to absorb shocks from uneven ground.



	HS/MS48	HS/MS60	HS/MS72
<b>Weight</b>	685 lbs (310 kg)	780 lbs (353 kg)	860 lbs (390 kg)
<b>Clearing Width</b>	48" (122 cm)	60" (152 cm)	72" (183 cm)
<b>Clearing Width at 30°</b>	42" (107 cm)	52" (132 cm)	62" (157 cm)
<b>Overall Width</b>	53" (135 cm)	65" (165 cm)	77" (195 cm)
<b>Overall Height</b>	38" (97 cm)		
<b>Power Requirements</b>	40 HP (30 kW)		
<b>Swing Angle</b>	30°		
<b>Type</b>	Hydraulic/Mechanical		
<b>Brush Diameter</b>	32" (80 cm)		
<b>Standard Features</b>	PU cowling, Parking legs, Poly steel combination brushes, Water spray bar, Water pump, adapter plate for wheel kit		
<b>Hitch Category</b>	CAT I or CAT II		
<b>Options</b>	Stainless steel or Steel cowling, wheel kit, centre driven		

BUILT TO LAST

METEC  
METAL TECHNOLOGY INC.

# LARGE SWEEPER



## HS 84, 96, 108



All-season attachment, designed to effortlessly clear various debris types like snow, gravel, and sand while safeguarding parking lots and roads. Made with high-quality wear-resistant polyurethane brushes and easy brush replacements. Maneuver effortlessly with semi-pneumatic caster wheels, and control debris with a 180-degree plastic cowling. Hydraulically adjust the brush angle for precision. Plus, it includes a wet kit with water tanks, a dust suppression spray bar, and a water pump for added convenience. Keep your outdoor spaces pristine year-round with this efficient attachment.



	HS84	HS96	HS108
<b>Weight</b>	lbs (kg)	~1,600 lbs (~726 kg)	lbs (kg)
<b>Clearing Width</b>	84" (213 cm)	96" (244 cm)	108" (274 cm)
<b>Clearing Width at 25°</b>	76" (193 cm)	87" (221 cm)	98" (249 cm)
<b>Overall Width</b>	89" (226 cm)	101" (257 cm)	113" (287 cm)
<b>Overall Height</b>	45" (114 cm) with water tanks		
<b>Swing Angle</b>	25°		
<b>Type</b>	Hydraulic		
<b>Brush Diameter</b>	32" (80 cm)		
<b>Standard Features</b>	PU cowling, Parking legs, Poly steel combination brushes, semi-pneumatic casters, wet kit and x2-26 G (98 l) water tanks		
<b>Hitch Category</b>	Volvo/ISO23727 Wheel Loader, Skid Steer Quick Attach, John Deere Hook and Pin, Case backhoe Loader Pattern, Kubota 4 Point front hitch (other hitches available)		

BUILT TO LAST  
METAL TECHNOLOGY INC.  
METEC



# COMPACT SWEEPER



## HSC 48, 60, 72



This compact sweeper has been developed with weight reduction and easy serviceability in mind. The environmentally friendly brushes are made of high-quality, wear-resistant polyurethane. The 20" (51 cm) diameter brushes are quick and easy to change. The included caster wheels make it easier to follow the edge of sidewalks and roads. 30° angling and oscillation help clean every dip on the road. The angle of the brush can be effortlessly hydraulically adjusted. 3/16" thick crash bar helps prevent damage from collisions.



	HSC48	HSC60	HSC72
<b>Weight</b>	250 lbs (113 kg)	280 lbs (127 kg)	310 lbs (141 kg)
<b>Clearing Width</b>	45" (114 cm)	57" (145 cm)	69" (175 cm)
<b>Clearing Width at 30°</b>	39" (99 cm)	49" (124 cm)	60" (152 cm)
<b>Overall Width</b>	48" (122 cm)	60" (152 cm)	72" (183 cm)
<b>Overall Height</b>	25" (64 cm)		
<b>Hydraulic Requirements</b>	9.5 GPM (15 l/min)		
<b>Swing Angle</b>	30°		
<b>Type</b>	Hydraulic		
<b>Brush Diameter</b>	20" (51 cm)		
<b>Standard Features</b>	Adjustable height caster wheels, Quick change brush system, Parking leg, Steel cowling, Front crash bar, Powder coated frame and cowling, Hydraulic angling 30 degrees, Oscillation		
<b>Hitch Category</b>	A frame, 3 point hitch, Skid steer (standard and mini), Custom mounting frame		
<b>Options</b>	Stainless steel cowling, Spray nozzles and water pump, A frame, 3 point hitch, Skid steer (standard and mini), Custom mounting frame		

BUILT TO LAST

METEC METAL TECHNOLOGY INC.



# BRUSH RINGS

METEC

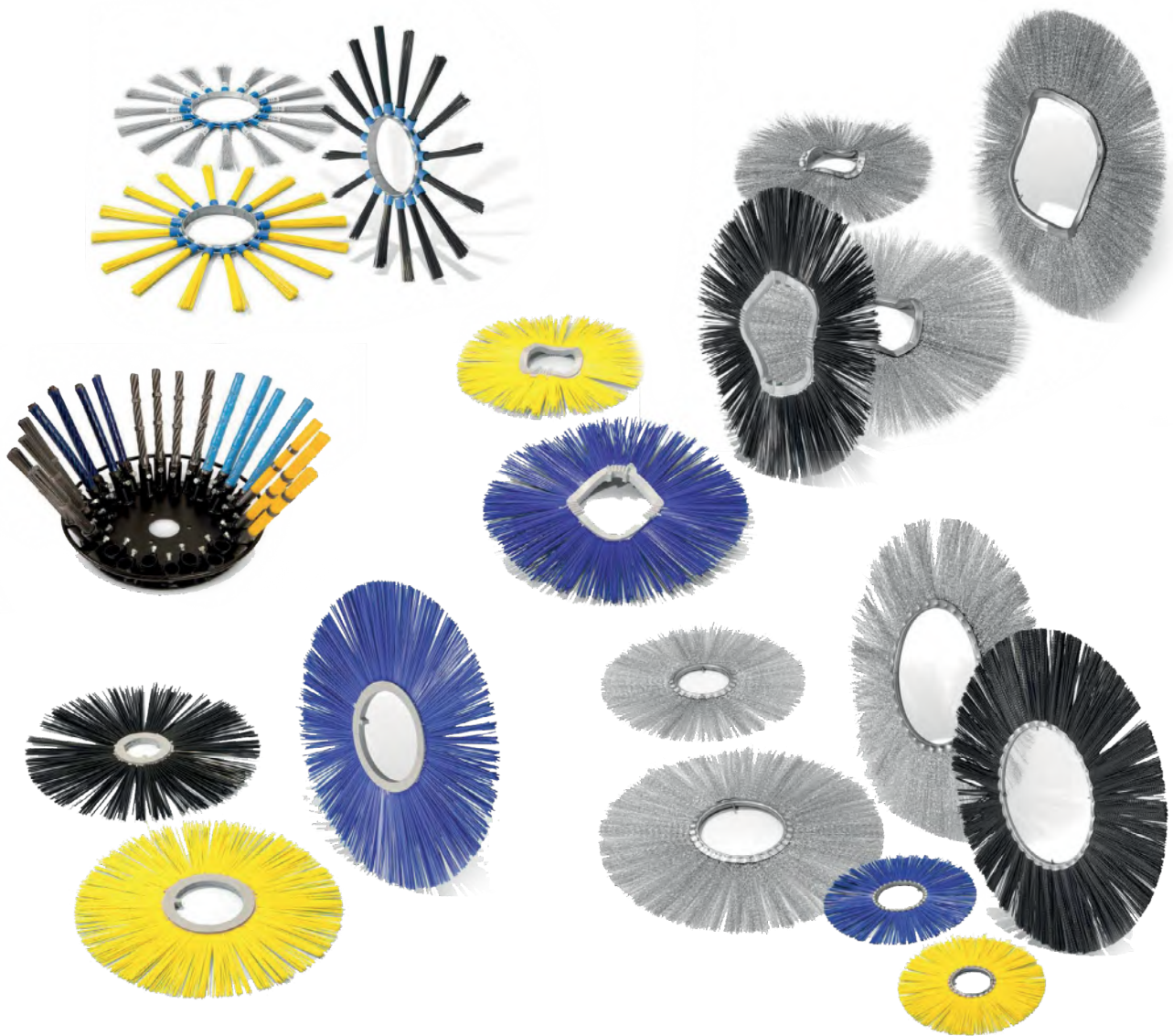
Weed Brushes, Brush Rings, Circular Brushes, Snow Brushes, Custom Brushes



Innovation that spins!

Unparalleled performance by patented processes, all brushes are manufactured with the environment in mind. Construction of the plastic rings mold the bristles directly to the core keeping the bristles on the brush instead of on the ground.

We have brushes that will work for almost all your needs. From waved design to straight rings, plastic or metal. Can be used for weed removal, snow removal and more. If you have a custom application contact us and we will find a solution that works for you.



BUILT TO LAST

METAL TECHNOLOGY INC.

METEC

## SPT-032, SPT-033



Combine this kit with a sweeper and water tank to sanitize public spaces much faster and more easily. The electric lance allows you to turn on the spray even while driving. Equipped with an adjustable nozzle, the lance can be hooked up to the sweeper and pivot with the attachment, ensuring everything is well covered. The spray wand comes standard with a 50' (15 m) hose, making it easy to clean spaces that are hard to reach, such as play structures.



### SPT-032 - Lance

<b>Description</b>	Electric Sanitizing Lance
<b>Height</b>	36" (91 cm)
<b>Rotation</b>	40°
<b>Includes</b>	Mounting bracket, 12V Electric 3 way ball valve

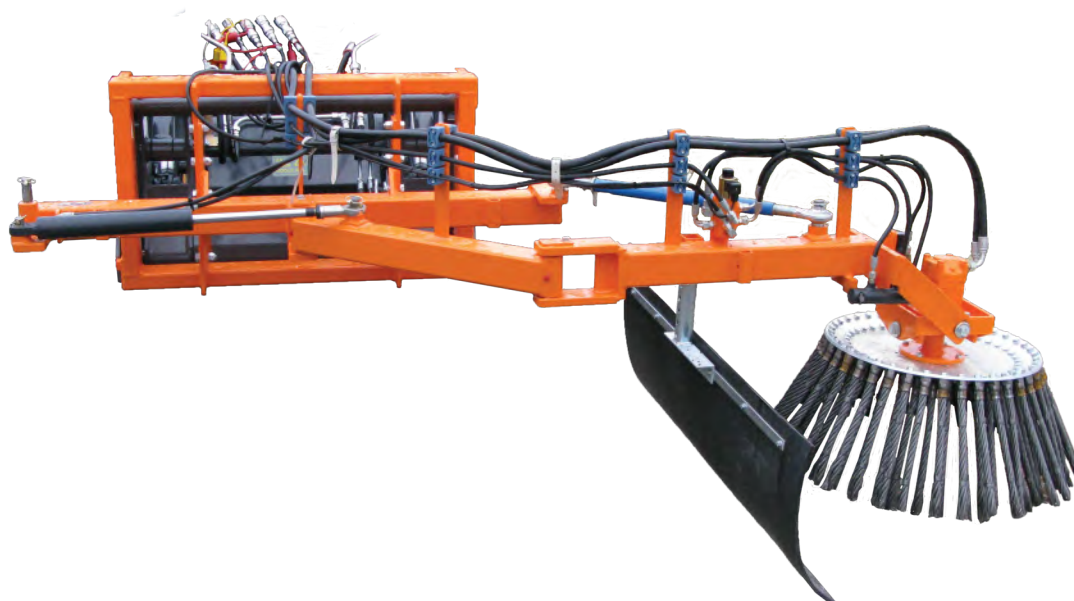
### SPT-033 - Hand Lance

<b>Description</b>	Hand Lance (spray wand)
<b>Length</b>	33" (84 cm)
<b>Includes</b>	Retractable hose reel with 50' (15 m) of hose, Hand Gun, Storage tube and all brackets and hardware

## UK 425, 475, 725 R/L



Hydraulic operated weed brush for use with compact tractors, loaders and implement carriers. Hydraulic tilt in all 4 directions of brush head and hydraulic reach. (operates on left or right by mechanical swing over) Fitted with strong hydraulic engine with integrated shock suppression valve and reversible. Requires 1 x hydraulic double acting motor valve for operating and 3 x double acting valves for control.

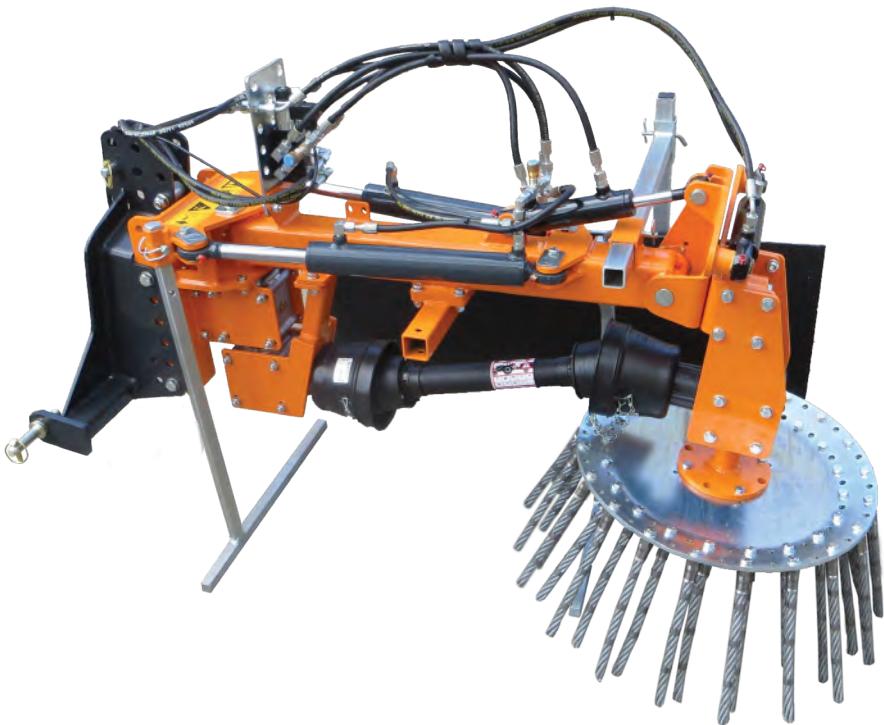


	UK 425 R/L	UK 475 R/L	UK 725 R/L
Weight	408 lbs (185 kg)	474 lbs (215 kg)	694 lbs (315 kg)
Sweeping Width	43" (110 cm)		83" (210 cm)
Width Folded	39" (100 cm)		63" (160 cm)
Overall Height	35" (90 cm)		
Power Requirements	22 HP (16 kW)	26 HP (19 kW)	29 HP (21 kW)
Brush diameter	17" (43 cm)	24" (62 cm)	
No. of Brushes/Tufts	20 pcs	40 pcs	
Standard Features	Hydraulic tilt, integrated shock suppression		
Hitch Category	A-Frame or 3-Point CAT I or II		
Options	Extra crossover valve, Electric reversal kit, Hydraulic weight transfer, 40 pcs brushes (UK 425), 80 pcs brushes (UK 475, 725)		

UK 625 MDS, UK 625 HDS



The compact yet strong design of this mechanically or hydraulically operated weed brush makes it ideal for compact tractors or tool carriers. Comes with a tough steel brush to get rid of weeds without the use of chemicals. With its multi-direction, 65° hydraulic tilt, the brush head can be tilted in four different directions. Reversible, so you can work from either side. Requires one hydraulic double-acting motor valve for operating, and three double-acting valves for control.



	UK 625 MDS Mechanical Operation	UK 625 HDS Hydraulic Operation
Weight	441 lbs (200 kg)	
Brush Head	24" (62 cm) w/2 32 steel brushes	
Brush Plate	Spline mounted	Brush
Brush Adjustment	Hydraulic	
Number of Brushes	40 pcs	
Angling 65° Right/Left	Hydraulic	
Security Equipment	Rubber Shield	Overflow Valve & Rubber Shield
Standard Features	Removable 10"	
Hitch Category	A-Frame or 3-Point CAT I or II	
Options	Electric reversal kit, Supporting wheels	

BUILT TO LAST

METAL TECHNOLOGY INC.







# MOWERS



# ROTARY MOWER - HEAVY



## FM/FH 1500, 1800, 2100, 2500 P



Thanks to its heavy-duty design, this front or rear-mounted rotary mower is efficient even on the toughest grass. A rear ejector ensures an even spread of the grass and prevents clumps. The safety screen, which remains at a constant height regardless of the cutting level, stops stones from flying out. It can be operated mechanically or hydraulically.



	FM/FH 1500 P	FM/FH 1800 P	FM/FH 2100 P	FM/FH 2500 P
<b>Weight</b>	551 lbs (250 kg)	650 lbs (295 kg)	750 lbs (340 kg)	970 lbs (440 kg)
<b>Cutting Width</b>	59" (150 cm)	70" (178 cm)	80" (203 cm)	97" (247 cm)
<b>Overall Width</b>	68" (172 cm)	78" (198 cm)	89" (225 cm)	107" (273 cm)
<b>Overall Height</b>	22" (56 cm)	22" (57 cm)	24" (61 cm)	24" (62 cm)
<b>Cutting Height</b>	1-4" (3-9 cm)			1-4" (3-10 cm)
<b>Power Requirements</b>	21 HP (15 kW)	24.5 HP (18 kW)	30 HP (22 kW)	35 HP (26 kW)
<b>Height Adjustment</b>	Continuous Variable			
<b>Number of Rotors</b>	3 pcs			
<b>Number of Knives</b>	6 pcs			
<b>Tires</b>	4 pcs 12 x 4"			4 pcs 14 x 6"
<b>Hitch Category</b>	A-Frame or 3-Point CAT I or II			
<b>Options</b>	Double multi knife, Gator knife 3-in-1, Mounting frame with tilting arms, Special mounting frame for wheel loaders, hydraulic side shift, Hydraulic stop valve arrangement for automatic stop and start when lifting or lowering the mower, foam filled puncture resistant wheels.			

BUILT TO LAST



# ROTARY MOWER - LIGHT



## TM/TH 1500, 1800



This quiet, light, and reliable rotary mower requires minimal maintenance. It can be mounted on the front or the rear and offers a wide rear discharge. Equipped with three special knives or gator knives. It can be operated mechanically or hydraulically.



	TM/TH 1500	TM/TH 1800
<b>Weight</b>	518 lbs (235 kg)	551 lbs (250 kg)
<b>Cutting Width</b>	60" (153 cm)	70" (178 cm)
<b>Overall Width</b>	66" (167 cm)	76" (193 cm)
<b>Overall Height</b>	20" (50 cm)	
<b>Cutting Height</b>	1-3" (3-8 cm)	
<b>Power Requirements</b>	19 HP (14 kW)	21 HP (15 kW)
<b>Height Adjustment</b>	Mechanical	
<b>Number of Rotors</b>	3 pcs	
<b>Number of Knives</b>	3 pcs	
<b>Tires</b>	4 pcs 10 x 3"	
<b>Hitch Category</b>	A-Frame or 3-Point CAT 0-I	
<b>Options</b>	Mulching kit, Chain guard, Rubber guard, Anti scalp 3 pcs., Hydraulic tilt-up, Foam filled puncture resistant wheels	

BUILT TO LAST

METEC  
METAL TECHNOLOGY INC.

# ROTARY MOWER - LIGHT FR



## FR 1500, 1800 LM/LH



You'll be impressed with the results of this front-mounted rotary mower. It offers a wide rear discharge. The hydraulic cutting height adjustment and tilt-up allow you to change the cutting height without getting out of the cab.



	FR 1500 LM/LH	FR 1800 LM/LH
<b>Weight</b>	584 lbs (265 kg)	628 lbs (285 kg)
<b>Cutting Width</b>	60" (153 cm)	70" (178 cm)
<b>Overall Width</b>	66" (167 cm)	76" (193 cm)
<b>Overall Height</b>	28" (70 cm)	
<b>Cutting Height</b>	1-3" (2-8 cm)	
<b>Power Requirements</b>	19 HP (14 kW)	21 HP (15 kW)
<b>Height Adjustment</b>	Hydraulic	
<b>Number of Rotors</b>	3 pcs	
<b>Number of Knives</b>	3 pcs	
<b>Tires</b>	4 pcs 10 x 3"	
<b>Standard Features</b>	Hydraulic tilt-up, Mounting frame: A-frame or 3-point	
<b>Hitch Category</b>	A-Frame or 3-Point CAT 0-I	
<b>Options</b>	Mulching kit, Chain guard, Rubber guard, Anti scalp disc 3 pcs., Foam filled puncture resistant wheels	

BUILT TO LAST



# ROTARY MOWER - SIDE DISCHARGE

## HC/HCH 1500, 1800 A



This front-mounted mower has countless features and is available with auto shut-off! The mechanical tilt-up and water coupling hookup allow for easy cleaning. Offers a right-side discharge. It can be operated mechanically or hydraulically. Also included are four large caster wheels, anti-scalp roller, and fixed knives.



	HC/HCH 1500 A	HC/HCH 1800 A
<b>Weight</b>	529 lbs (240 kg)	606 lbs (275 kg)
<b>Cutting Width</b>	60" (153 cm)	70" (178 cm)
<b>Overall Width</b>	67" (170 cm)	76" (193 cm)
<b>Overall Height</b>	31" (80 cm)	
<b>Cutting Height</b>	1-3" (3-8 cm)	
<b>Power Requirements</b>	21 HP (15 kW)	27 HP (20 kW)
<b>Height Adjustment</b>	Hydraulic or Mechanical	
<b>Number of Rotors</b>	3 pcs	
<b>Number of Knives</b>	3 pcs	
<b>Tires</b>	4 pcs 10 x 3"	
<b>Hitch Category</b>	3PH	
<b>Options</b>	Mulching kit, Anti scalp disc 3 pcs., Puncture resistant wheels with armor plating support	

BUILT TO LAST

**METEC**  
METAL TECHNOLOGY INC.



# ROTARY MOWER - TRIPLEX



## TH/THM 2500, 3000



Want to save time? This mower, divided into three sections, is your solution! You'll be more than satisfied with the large cutting width provided by the five fixed knives. The hydraulic tilt-up is ideal for quick and easy maintenance and cleaning. Offers a fully hydraulic or mechanical/hydraulic operation. Mechanical cutting height adjustment.



	TH/THM 2500	TH/THM 3000
<b>Weight</b>	805 lbs (365 kg)	970 lbs (440 kg)
<b>Cutting Width</b>	98" (248 cm)	114" (290 cm)
<b>Overall Width</b>	100" (253 cm)	117" (298 cm)
<b>Overall Height</b>	20" (50 cm)	
<b>Cutting Height</b>	1-3" (2-8 cm)	
<b>Power Requirements</b>	34 HP (25 kW)	42 HP (31 kW)
<b>Height Adjustment</b>	Hydraulic or Mechanical	
<b>Number of Rotors</b>	5 pcs	
<b>Number of Knives</b>	5 pcs	
<b>Tires</b>	6 pcs 10 x 3"	
<b>Standard Features</b>	Hydraulic lift of side mowers, Automatic stop of blades.	
<b>Hitch Category</b>	3-Point or A-Frame CAT 1	
<b>Options</b>	Hydraulic Tilt-Up, Mulching kit, Chain guard, Rubber guard, Anti scalp disc, Flotation mounting frame, Foam filled puncture resistant wheels, Wide wheels included wheel fork.	

BUILT TO LAST



# ROTARY MOWER - TRIPLEX



## TH 2500, 3000 C



Want to save time? This mower, divided into three sections, is your solution! You'll be more than satisfied with the large cutting width provided by the five fixed knives. The hydraulic tilt-up is ideal for quick and easy maintenance and cleaning. For safety, the auto shut-off kicks in when knives are tilted at an angle of 30° or more. Offers a fully hydraulic or mechanical/hydraulic operation. Equipped with heavy-duty caster wheels.



	TH 2500 C	TH 3000 C
<b>Weight</b>	970 lbs (440 kg)	1,058 lbs (480 kg)
<b>Cutting Width</b>	98" (248 cm)	114" (290 cm)
<b>Overall Width</b>	100" (253 cm)	117" (298 cm)
<b>Overall Height</b>	20" (50 cm)	
<b>Cutting Height</b>	1-3" (3-8 cm)	
<b>Power Requirements</b>	34 HP (25 kW)	42 HP (31 kW)
<b>Hydraulic Requirements</b>	16 GPM (60 l/min)	19 GPM (70 l/min)
<b>Height Adjustment</b>	Hydraulic	
<b>Number of Rotors</b>	5 pcs	
<b>Number of Knives</b>	5 pcs	
<b>Tires</b>	6 pcs 10 x 3"	
<b>Hitch Category</b>	3-Point or A-Frame CAT I	
<b>Options</b>	Hydraulic Tilt-Up, Mulching kit, Chain guard, Rubber guard, Anti scalp disc, Flotation mounting frame, Foam filled puncture resistant wheels, Wide wheels included wheel fork	

BUILT TO LAST



# FLAIL MOWER - EASY

METEC

## SK 1300, 1500, 1700 MM/MH



As the name implies, this mower will make your life easier. It can be operated hydraulically or mechanically and mounted at the front or the rear. With the hydraulic side shift, you can easily move the mower left and right without leaving the cab. (optional) The hydraulic rear roller rides on the ground and adjusts the cutting height as you go. Thanks to the rubber skirt, front flaps, or chain guard, you won't have to worry about projecting gravel everywhere. Also included are anti-scalping skid pans, a bottom blade to ensure even mulching. Supporting legs for hassle-free storage.



BUILT TO LAST

METAL TECHNOLOGY INC.

METEC

	SK 1300 MM/MH	SK 1500 MM/MH	SK 1700 MM/MH
<b>Weight</b>	739 lbs (335 kg)	827 lbs (375 kg)	915 lbs (415 kg)
<b>Cutting Width</b>	51" (130 cm)	59" (150 cm)	67" (170 cm)
<b>Overall Width</b>	62" (158 cm)	70" (178 cm)	78" (198 cm)
<b>Overall Height</b>	35" (88 cm)		
<b>Cutting Height</b>	1-3" (3-8 cm)		
<b>Power Requirements</b>	16 HP (12 kW)	19 HP (14 kW)	21 HP (15 kW)
<b>Number of Y Flails</b>	84 sets	96 sets	112 sets
<b>Number of J Flails</b>	42 sets	48 sets	56 sets
<b>Standard Features</b>	Heavy-duty rotary axle, supporting leg for storage, front flaps or chain guard		
<b>Hitch Category</b>	3 Point Hitch		
<b>Options</b>	Hydraulic side shift, Rear roller with hydraulic height adjustment		

# FLAIL MOWER - HEAVY



## SK 1500, 2000 PM/PH



Everything the SK MM/MH model has to offer, plus the advantage of high weight on the drum makes it ideal for mulching. It can be operated hydraulically or mechanically and mounted at the front or the rear. With the hydraulic side shift, you can easily move the mower left and right without leaving the cab. (optional) The hydraulic rear roller rides on the ground and adjusts the cutting height as you go. Stable spinning at 2500 rpm. Thanks to the rubber skirt (optional), you won't have to worry about projecting gravel everywhere. Also included are anti-scalping skid pans, a bottom blade to ensure even mulching, and supporting legs for hassle-free storage.



	SK 1500 PM/PH	SK 2000 PM/PH
<b>Weight</b>	1,213 lbs (550 kg)	1,543 lbs (700 kg)
<b>Cutting Width</b>	59" (150 cm)	87" (220 cm)
<b>Overall Width</b>	72" (184 cm)	92" (234 cm)
<b>Overall Height</b>	35" (90 cm)	
<b>Cutting Height</b>	1-3" (3-8 cm)	
<b>Power Requirements</b>	20 HP (15 kW)	30 HP (22 kW)
<b>Height Adjustment</b>	Hydraulic or Mechanical	
<b>Number of J Fails</b>	42 pcs.	56 pcs.
<b>Number of Y Fails</b>	84 pcs.	112 pcs.
<b>Standard Features</b>	Heavy-duty rotary axle, supporting leg for storage, front flaps or chain guard	
<b>Hitch Category</b>	A-Frame or 3-Point CAT I or II	
<b>Options</b>	Hydraulic Tilt-Up, Mulching kit, Chain guard, Rubber guard, Anti scalp disc, Flotation mounting frame, Foam filled puncture resistant wheels, Wide wheels included wheel fork	

BUILT TO LAST





# FLAIL MOWER HEAD



## MKL 10



Designed to work with Dückers UNA 100/200 and DBM 400 outriggers. The MKL 10 flail mower head is equipped with light-weight flat flails. The mowing head can be used of either left or right sides.

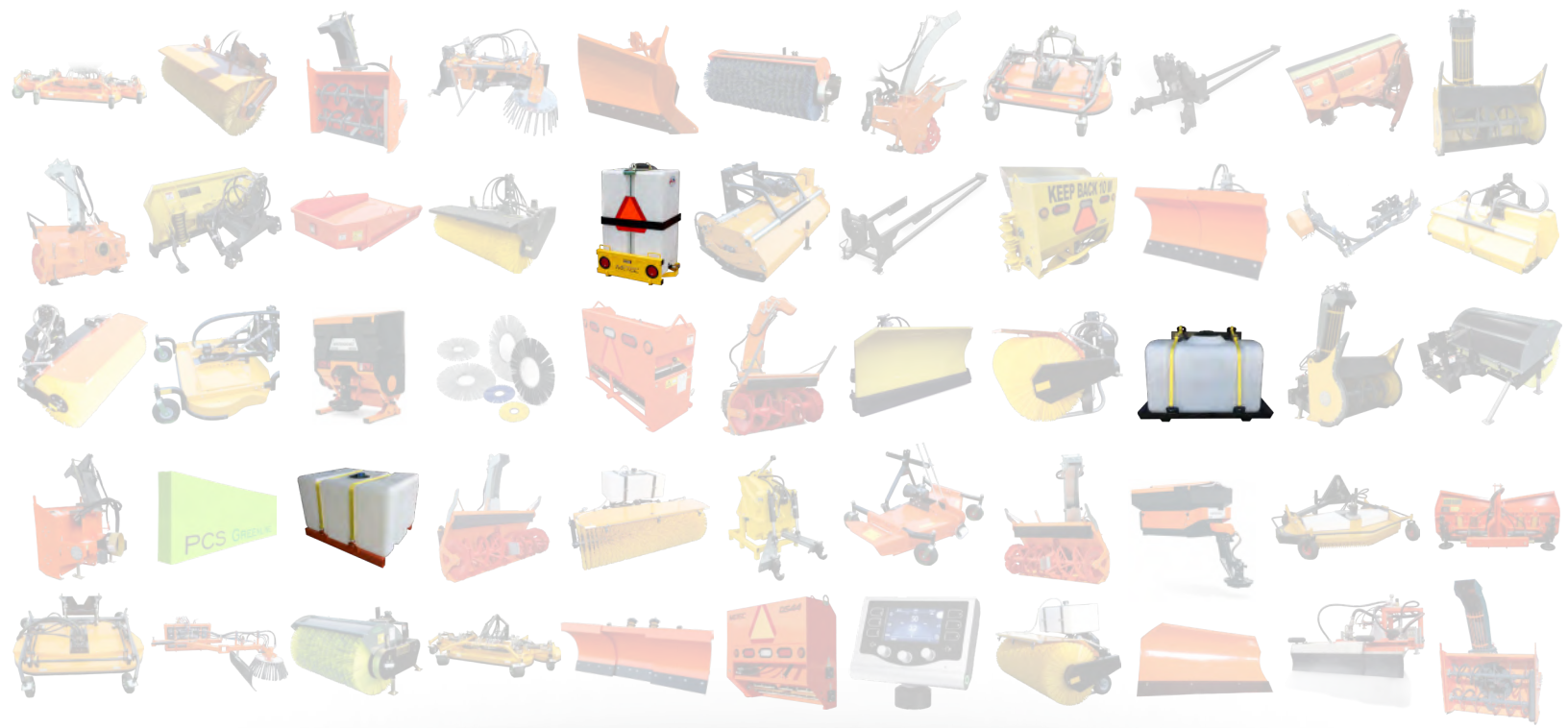


	MKL 10
Weight	397 lbs (180 kg)
Working Width	39.4" (1,000 mm)
Rotor Speed	2700 RPM

BUILT TO LAST

METAL TECHNOLOGY INC.





# WATER TANKS

# WATER TANK

METEC

## WT 100, 200



This water tank is ideal for use with sweepers, watering arms, pressure washers, and spray bars. Custom sizes and configurations are available to suit your specific needs. The steel frame is powder-coated for protection against corrosion and is also available in aluminum. Made of UV-resistant material. Optional baffles are also available to reduce water movement during transportation.



100 G \*Kubota model shown



200 G

	WT 100	WT 200
<b>Weight</b>	315 lbs (142 kg)	225 lbs (102 kg)
<b>Volume</b>	100 G (455 l)	200 G (909 l)
<b>Height</b>	35" (89 cm)	33" (84 cm)
<b>Width</b>	46" (117 cm)	39" (99 cm)
<b>Depth</b>	38" (97 cm)	46" (117 cm)
<b>Standard Features</b>	Tie down straps, lower manual ball valve, 8" top lid, Water pump	
<b>Hitch Category</b>	3PH CAT I or CAT II	Please Inquire
<b>Options</b>	Custom sizes	

\*Water pump not included for Kubota

# WATER TANK

METEC

## WT 80



There's a reason why we call this one the backpack! Given its compact design and lightweight, this 80-gallon water tank can be easily removed. The tank is equipped with a 45-psi water pump designed for articulating and straight frame tractors. The belly strap stops the tank from expanding when exposed to sunlight. Quick connectors provided allow you to empty the tank easily and safely. Stop, turn and taillights are combined into one single light. The steel frame is powder-coated for protection against corrosion, and tubing is capped to prevent rust.



WT 80	
Weight Filled	790 lbs (358 kg)
Volume	80 G (303 l)
Height	47" (119 cm)
Width	31" (79 cm)
Depth	36" (91 cm)
Standard Features	Stop, Turn, Tail, Reverse Lights
Hitch Category	Must be mounted with tilting frame / 3PH
Options	Custom colours available

This tilting frame can be used with drop sanders and water tanks on wheel loaders and gives easy access to the engine compartment.



BUILT TO LAST  
METAL TECHNOLOGY INC.  
METEC





# CUTTING EDGES

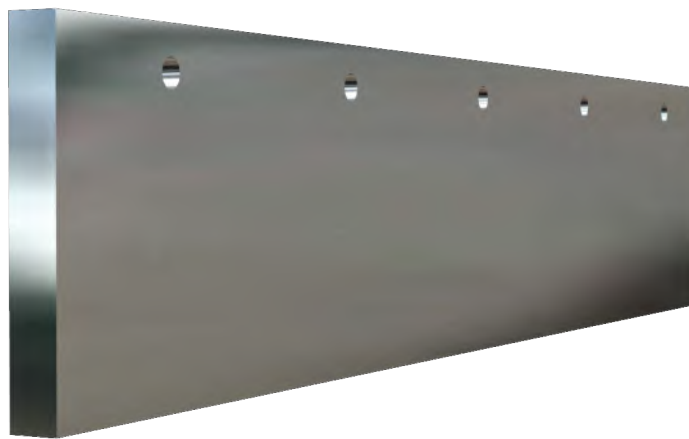
# STEEL BLADES MS



Made of high quality wear-resistant steel with a hardness between 450 and 525 brinell. In this context, the steel blade easily removes frozen snow and even relieves icy roads. Users who are looking for an aggressive snow removal and a long service life are well served.

Any and all issues regarding snow plowing are solved with ease, no matter in which altitude your work takes place. \*

\*not recommend on cobblestone pavement



## Your benefits at a glance:

- low priced
- long service life
- very aggressive
- highly tempered steel of 450 - 525 HB
- available in 5.9x0.8" (150x20 mm) or 7.9x0.8" (200x20 mm)

## Suitable for the following use:



highway

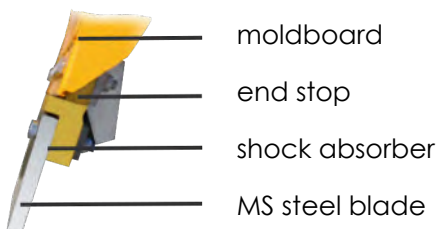


regular road



in town

## Mounting aid:



BUILT TO LAST

METAL TECHNOLOGY INC.  
**METEC**

# COMBINATION BLADE MK

METEC



The combination blade is a composite blade, made of wear-resistant steel with a hardness of 450 brinell and rubber, which was designed for especially high performances and specially formed ceramic parts.

The combination of those three materials provides aggressive snow removal and very good sliding properties as well. Due to the long service life and consumption saving characteristics, the high performance combination blade is very cost saving in addition.



## Your benefits at a glance:

- cost saving and noise absorbing
- very good sliding properties
- aggressive snow removal
- long service life
- available in 1, 1.4, 2" (25, 36 or 50 mm) thickness

## Suitable for the following use:



highway

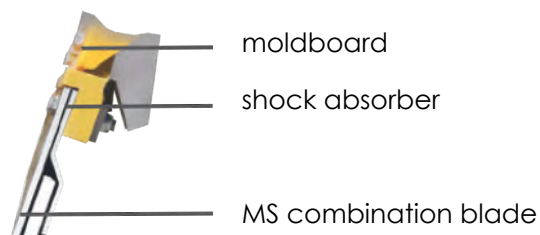


regular road



in town

## Mounting aid:



BUILT TO LAST

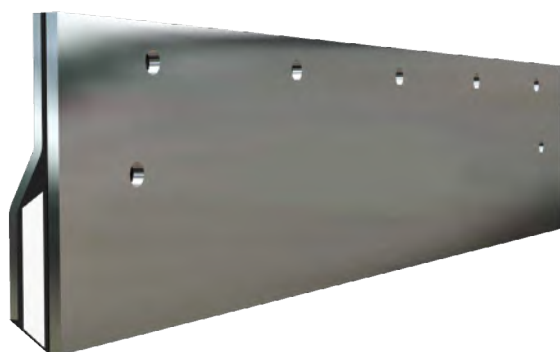
METEC  
METAL TECHNOLOGY INC.

# RUBBER-CERAMIC BLADE MGK



Rubber-ceramic blades are made of a specific rubber mix, which was designed for especially high performances and are available with or without an additional steel blade to secure the right assembly of specific snow plows.

This blade contains ceramic pieces, which are embedded in the middle of blade to guarantee a long service life compared to rubber or polyurethane blades. The ceramic is specially formed to protect them against slipping or breaking. Additionally the special form provides better sliding properties and smooth running.



## Your benefits at a glance:

- gentle removal
- good sliding properties
- available with or without steel insert
- long service life
- available in 1.7 or 2" (42 or 50 mm) thickness

## Suitable for the following use:



limited use  
on airport  
runways



regular road

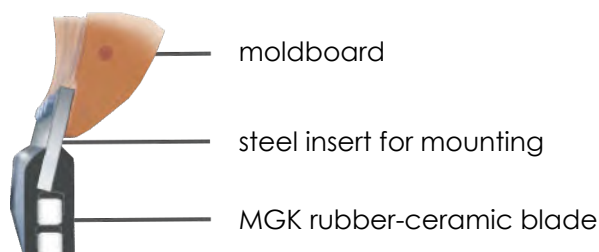


in town



applicable on  
cobblestones

## Mounting aid:



BUILT TO LAST

METAL TECHNOLOGY INC.

METEC



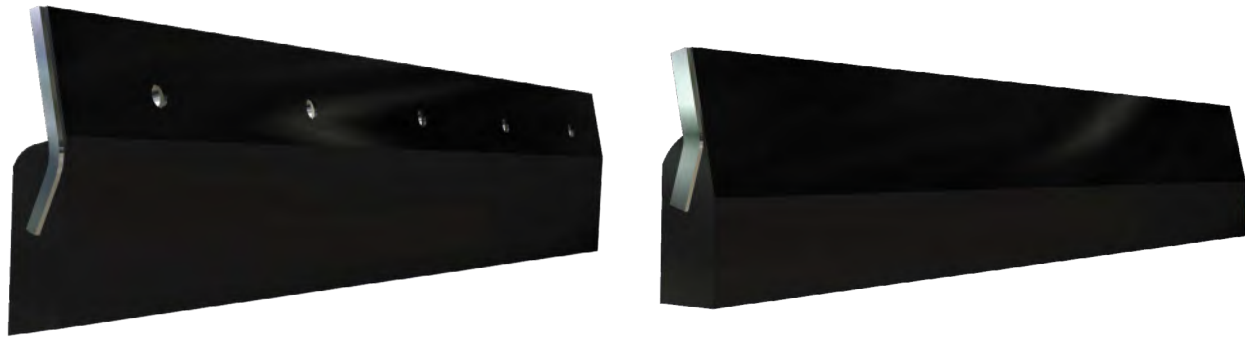
# RUBBER BLADE MG

METEC



Made of a special rubber mix, which was designed for especially high performances. Rubber blades are manufactured as molded parts and are available with or without an additional steel blade to secure the right assembly to specific snow plows.

These blades are developed and designed to absorb any noise. This secures a low-noise and gentle removal. Therefore, these rubber blades are often used on sensitive routes like cobblestone pavement.



## Your benefits at a glance:

- noise absorbing and very gentle removal
- wear-resistant for mud and light snow
- available with or without steel blade
- available in 1.7 or 2" (42 or 50 mm) thickness

## Suitable for the following use:



regular road



in town

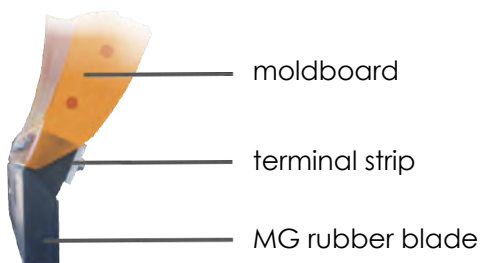


applicable on  
cobblestones



airport  
runways

## Mounting aid:



BUILT TO LAST

METAL TECHNOLOGY INC.

METEC

# ELASTOMER BLADE MEG 90



MEG 90 blades have been developed especially for the usage with smaller equipment, such as smaller plows. It enables you to clear the road even more efficient and more economizing.

Our Elastomer blade stands out with a hardness of 90° Shore. Furthermore, it is extremely gentle, stable and resistant, which makes it an economic alternative compared to polyurethane blades. Wherever you need to go easy on sensitive undergrounds, the MEG 90 might be the perfect solution! Additionally METEC is able to offer different profiles, depending on your plow.



## Your benefits at a glance:

- cost-efficient
- wear-resistant
- gentle removal
- with or without ceramic
- available in various measurements

## Suitable for the following use:



in town



applicable on  
cobblestones



airport  
runways

BUILT TO LAST

METEC  
METAL TECHNOLOGY INC.

# RUBBER-TEXTURE BLADE GG



Rubber-texture blades are strengthened through the use of embedded texture. As a result, these blades are very wear-resistant, hardy and tough. At the same time, rubber-texture blades are extremely elastic and shock absorbing.

These aforementioned characteristics make this blade is a very efficient yet gentle and resistant alternative, which is highly recommended for the snow removal on cobblestone pavement.



## Your benefits at a glance:

- shock absorbing
- gentle removal, applicable on cobblestone
- great performance on uneven grounds
- longer service life through embedded texture
- available in various measurements

## Suitable for the following use:



in town



applicable on  
cobblestones



airport  
runways

BUILT TO LAST

METEC  
METAL TECHNOLOGY INC.

# POLYURETHANE BLADE PCS



The PCS Greenline blade combines all advantages of the high tech plastic polyurethane.

The PCS is best suited for small devices on parking lots, small roads and sidewalks. Thanks to our production capability's, this blade can be offered in various length, widths and thicknesses. Due to a hardness of 90° Shore A, the PCS is both tremendously wear-resistant and elastic. It can be used everywhere, regardless the surfaces of the roads, the snowplow or weather conditions - a true advantage over comparable blades.



## Your benefits at a glance:

- shock absorbing and low-noise
- gentle removal
- great performance on uneven grounds
- drilled holes or 45° bevels upon request
- standardized or individual measurements

## Suitable for the following use:



in town



applicable on  
cobblestones



airport  
runways

BUILT TO LAST

METEC  
METAL TECHNOLOGY INC.







# HOW TO PICK THE RIGHT BLADE



The following overview contains all characteristics and benefits in a direct comparison and serves as a decision support. It helps to figure out which blade matches your needs and requirements best.

Still undecided? We look forward to receiving your e-mail or call!

	MS steel	MK combination	MGK rubber-ceramic	MG, MEG, GG, PCS rubber, polyurethane
				
service life	●●●○○	●●●●●	●●●○○	●●○○○
aggressiveness	●●●●●	●●●●●	●●○○○	●○○○○
removing ice	●●●●●	●●●●●	○○○○○	○○○○○
sliding properties	●●○○○	●●●●●	●●○○○	○○○○○
shock absorbing*	●○○○○	●○○○○	●●●○○	●●●●●
*MS, MK incl. shock absorbers				
ground protection	○○○○○	●●○○○	●●●○○	●●●●●
low-noise	●○○○○	●●●○○	●●●●●	●●●●●
cobblestone	○○○○○	●○○○○	●●●○○	●●●●●
dirt roads	○○○○○	○○○○○	●●●●●	●●●●●

BUILT TO LAST

METAL TECHNOLOGY INC.



# TYPES OF BLADES



Cutting edges are manufactured individually to fit any snow plough perfectly. Due to our technical skills as well as a high knowledge and experience, we are able to optimize snow plowing purposefully. As a result, our cutting edges are available in many different types.

Combination MK



MK 25 0°



MK 25.1 0°



MK 36 0°



MK 36 13°



MK 36 20°



MK 36.1 0°



MK 50 0°



MK 50 13°

Rubber-ceramic MGK



MGK 30 0°



MGK 42 0°



MGK 42 13°



MGK 42.1 0°



MGK 45 0°



MGK 50 0°



MGK 50 7°



MGK 50 13°



MGK 50 25°



MGK 50 25°



MGK 50 50°

Rubber MG



MG 30 0°



MG 42 13°



MGK 45 0°



MG 50 7°



MG 50 13°



MG 50 25°



MG 50 F-plow



MG 50 25°

Elastomer MEG90



MEG 90 - K



MEG 90



MEG 90 - K



MEG 90



MEG 90



MEG 90 - K

Steel / MS / PU / GG



MS 150 x 20



MS 200 x 20



PU PCS Greenline

size  
more upon request

150 x 30  
150 x 50  
200 x 30  
200 x 50



rubber-texture GG

size

150 x 15    200 x 30  
150 x 20    200 x 40  
150 x 30    200 x 50  
150 x 50    250 x 50

BUILT TO LAST

METAL TECHNOLOGY INC.



# BLADE ORDER FORM



## Your Inquiry

☐ Quotation    ☐ Order    ☐ Other: \_\_\_\_\_  
\_\_\_\_\_

## Your Contact

☐ Mr.    ☐ Ms.

Name	_____	First Name	_____
Street	_____	Company	_____
ZIP/Postal Code	_____	State/Province/ Territory	_____
Phone	_____	Country	_____
Fax	_____	E-mail	_____

## Cutting Edges

- |  |   |  |
|--|---|--|
| <input type="checkbox"/> Steel MS 150 x 20     | <input type="checkbox"/> Steel MS 200 x 20          | <input type="checkbox"/> Combination MK 50 |
| <input type="checkbox"/> Combination MK 25     | <input type="checkbox"/> Combination MK 36          |  |
| <input type="checkbox"/> Rubber-Ceramic MGK 42 | <input type="checkbox"/> Rubber-Ceramic MGK 50      |  |
| <input type="checkbox"/> Rubber MG             | <input type="checkbox"/> Elastomer MEG 90           |  |
| <input type="checkbox"/> Rubber-Texture GG     | <input type="checkbox"/> Polyurethane PCS Greenline |  |

Amount needed (Sets): \_\_\_\_\_

After completing this form please email it to [sales@metec.ca](mailto:sales@metec.ca)

# BLADE ORDER FORM

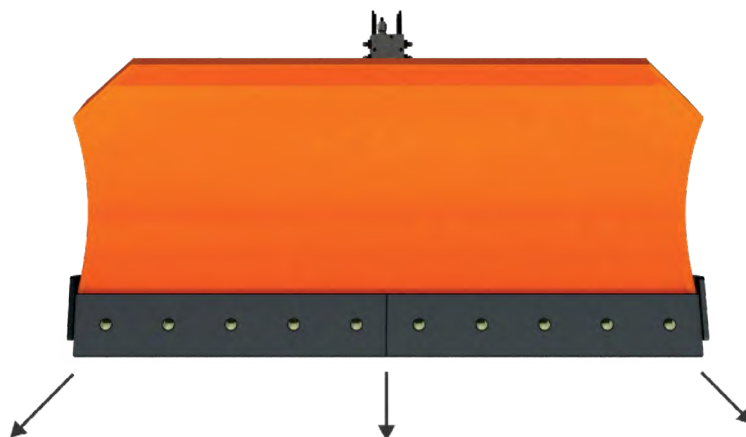
METEC



Please indicate all measurements in millimeters.

Plow Manufacturer \_\_\_\_\_ Year of Construction \_\_\_\_\_

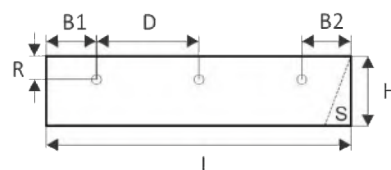
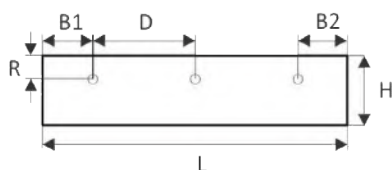
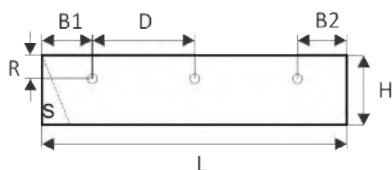
Plow Type \_\_\_\_\_ Attack Angle \_\_\_\_\_



right  
(in driving direction)

inner

left  
(in driving direction)



L: \_\_\_\_\_

H: \_\_\_\_\_

R: \_\_\_\_\_

B1: \_\_\_\_\_

B2: \_\_\_\_\_

D: \_\_\_\_\_

S (beveled edge): ☐ Yes ☐ No

Number of holes: \_\_\_\_\_

Ø holes: \_\_\_\_\_

L: \_\_\_\_\_

H: \_\_\_\_\_

R: \_\_\_\_\_

B1: \_\_\_\_\_

B2: \_\_\_\_\_

D: \_\_\_\_\_

Number of inner blades: \_\_\_\_\_

Number of holes: \_\_\_\_\_

Ø holes: \_\_\_\_\_

L: \_\_\_\_\_

H: \_\_\_\_\_

R: \_\_\_\_\_

B1: \_\_\_\_\_

B2: \_\_\_\_\_

D: \_\_\_\_\_

S (beveled edge): ☐ Yes ☐ No

Number of holes: \_\_\_\_\_

Ø holes: \_\_\_\_\_

Your questions and comments: \_\_\_\_\_

\_\_\_\_\_

\_\_\_\_\_

BUILT TO LAST

METAL TECHNOLOGY INC.

METEC